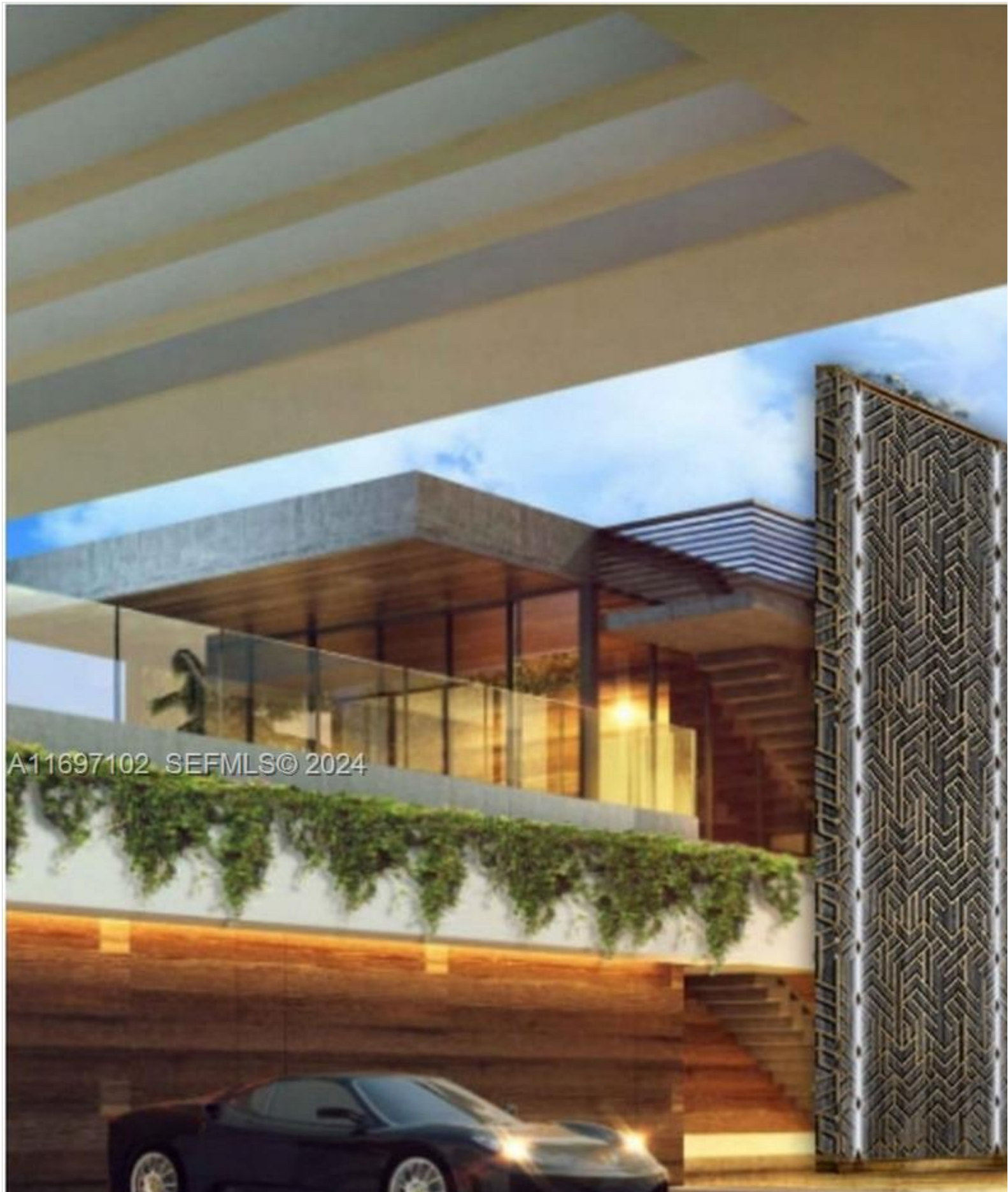


INES FLAX

YOUR PREMIER OCEANFRONT SPECIALIST
& MOST TRUSTED NAME IN SOUTH FLORIDA REAL ESTATE.



A11697102 SEFMLS© 2024



Price: \$60,000,000		MLS Number: A11697102		Single Family	
130 Palm Ave, Miami Beach, Florida 33139 USA					
Beds: 9		Baths: 11		Half Baths: 4	
Living Area: 15,132		Lot Square Feet: 30,000		HOA Fees:	
Waterfront: YES		Year Built: 2025			
Lot Dimensions: 30000		Community: PALM ISLAND			
Subdivision: PALM ISLAND					

ABOUT THIS PROPERTY

One of the finest custom-built homes on its way to completion adorned with intricate design in marble, wood and bra innovative, visually stunning Stately estate with finishes and details of the highest quality. Unique large open Club ro garage with lifts, theater, office, butler's kitchen, and laundry. Fully automated smart home, Crestron touchscreens a terrace with breathtaking panoramic views of Downtown and South Beach. Located on prestigious gated and police

