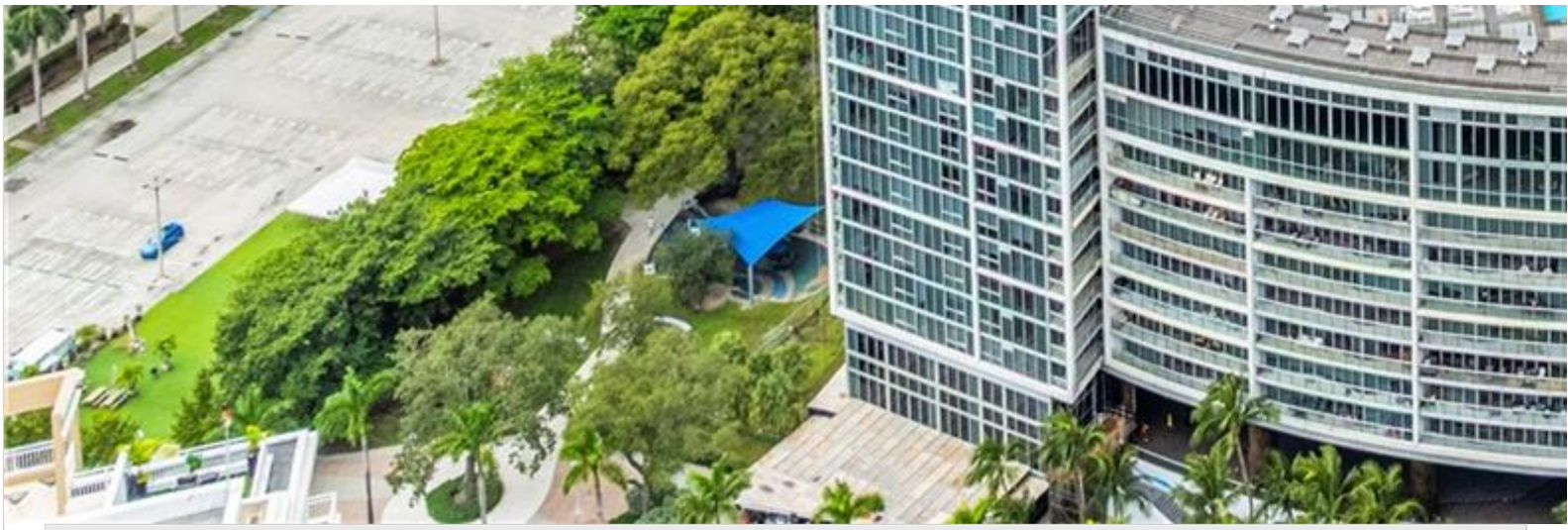


INES FLAX

YOUR PREMIER OCEANFRONT SPECIALIST
& MOST TRUSTED NAME IN SOUTH FLORIDA REAL ESTATE.





Price: \$2,300,000

MLS Number: A11879049

Condo / Town Home

465 Brickell Ave Unit 4801, Miami, Florida 33131 USA

Beds: 3

Baths: 2

Half Baths: 1

Living Area: 1,825

Unit: 4801

HOA Fees: \$2,867

Waterfront: YES

Year Built: 2008

Community: ICONBRICKELL CONDO NO 1

Subdivision: ICONBRICKELL CONDO NO 1

Elementary School: Southside

Junior High: Shenandoah

ABOUT THIS PROPERTY

PRICE ADJUSTMENT FOR ICON BRICKELL CONDO, a waterfront and highrise luxury condo with city, river and bay views. The unit features a modern layout with luxury accents of light fixtures, marble, wood doors and wall, Italian cabinetry, leather finishes in primary bedrooms and a full bathroom. Breath-taking open views of the Miami River, Biscayne Bay and city partially. Concierge service, a designated parking space, close to the financial district, restaurants, shopping centers and parks. A drive to sport, cultural and entertainment venues and airports.

PROPERTY LOCATION

Image

