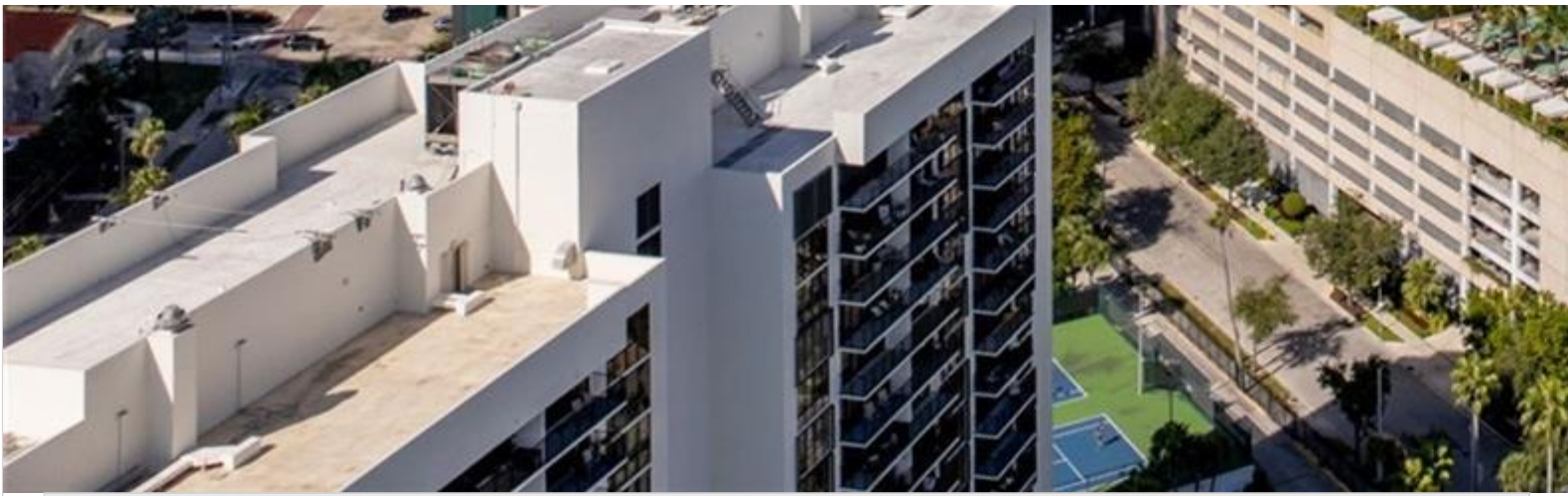


INES FLAX

YOUR PREMIER OCEANFRONT SPECIALIST
& MOST TRUSTED NAME IN SOUTH FLORIDA REAL ESTATE.



A11919177, SEFMLS© 2025



| | | | | | | | | | | |
|---|--|--|-----------------------|--|--|-------------------|--|--|--|--|
| Price: \$1,775,000 | | | MLS Number: A11919177 | | | Condo / Town Home | | | | |
| 1435 Brickell Ave Unit 3412, Miami, Florida 33131 USA | | | | | | | | | | |
| Beds: 2 | | | Baths: 2 | | | Half Baths: 1 | | | | |
| Living Area: 1,747 | | | Unit: 3412 | | | HOA Fees: \$3,687 | | | | |
| Year Built: 2003 | | | | | | | | | | |
| Community: MILLENNIUM TOWER CONDOMIN | | | | | Subdivision: MILLENNIUM TOWER CONDOMIN | | | | | |
| Elementary School: Southside | | | | | Junior High: Shenandoah | | | | | |

ABOUT THIS PROPERTY

Welcome to the Private Residences at the Four Seasons® where elevated living meets timeless sophistication. Set views and an inviting, light-filled floor plan designed for effortless luxury. Enjoy world-class, 5-star amenities including desire a flexible lifestyle, this home allows participation in the hotel rental program, giving you the option to generate to live, but to live original.

Image

