

INES FLAX

YOUR PREMIER OCEANFRONT SPECIALIST
& MOST TRUSTED NAME IN SOUTH FLORIDA REAL ESTATE.

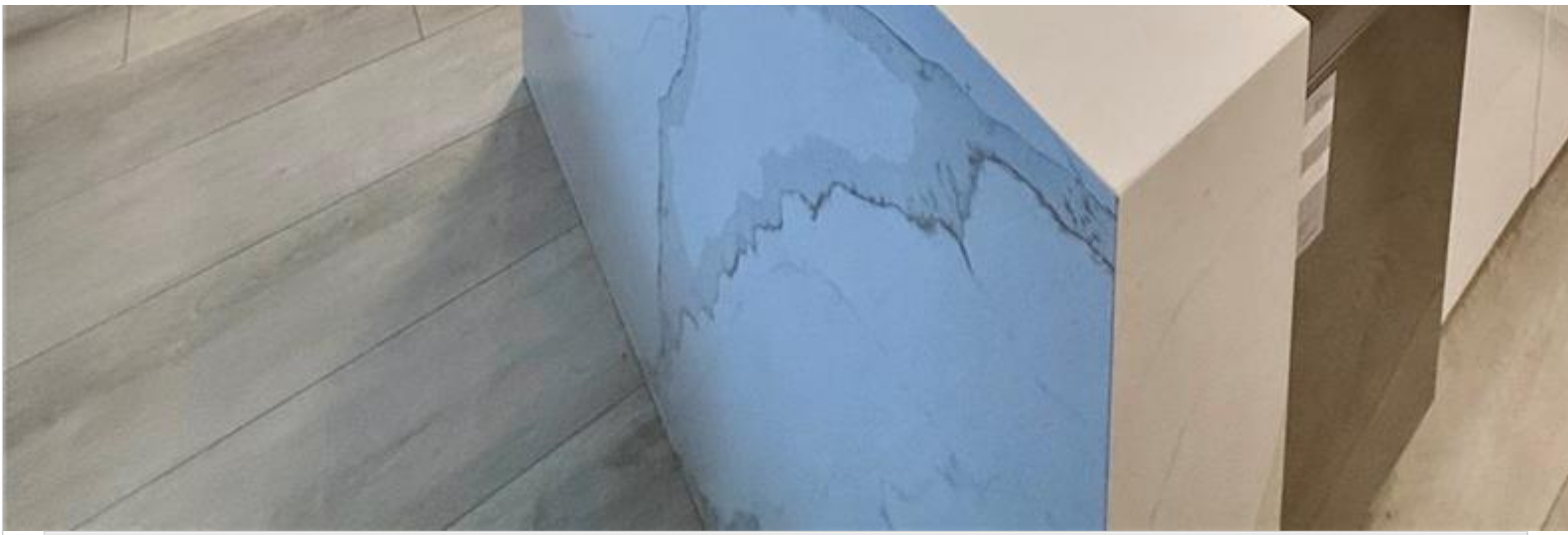
ONE Sotheby's International Realty
119 Washington Ave Suite 300
33139

Phone: 786.218.7600 -

<http://www.inesflax.com>

Email: InesFlax@aol.com





Price: \$695,000		MLS Number: A11957066		Condo / Town Home	
770 Claughton Island Dr Unit 1503, Miami, Florida 33131 USA					
Beds: 2		Baths: 2		Living Area: 968	
Unit: 1503		HOA Fees: \$1,893		Waterfront: YES	
Year Built: 1990					
Community: ISOLA CONDO			Subdivision: ISOLA CONDO		
Elementary School: Southside			Junior High: Shenandoah		

ABOUT THIS PROPERTY

Stunning 2BD/2BA Condo with Breathtaking Bay & City Views on Brickell Key! Fully renovated and furnished with iron and doors, new baths, sleek European-style kitchen, stainless steel appliances, tile plank floors, tons of natural light city and bay views. Features a split floor plan, 1 assigned parking space with availability for another, and new A/C. Enjoy living with 24hr concierge, valet, tennis courts, heated pool & spa, waterfront gym, club room, business center & more. Location—walk to Brickell City Centre, top restaurants, and parks. Just minutes to highways, Downtown, and Miami

