

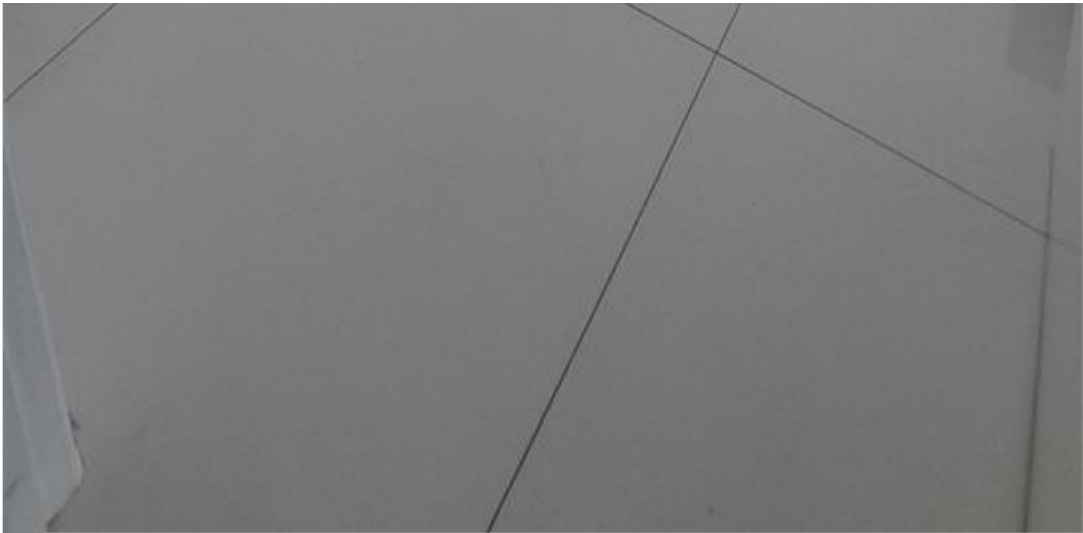
INES FLAX

YOUR PREMIER OCEANFRONT SPECIALIST
& MOST TRUSTED NAME IN SOUTH FLORIDA REAL ESTATE.

ONE Sotheby's International Realty
119 Washington Ave Suite 200
33139
Phone: 786.218.7600 - 786.218.7601
<http://www.inesflax.com>
Email: InesFlax@aol.com



A11458326 © Miami, FL 33139 2022



Price: \$980,000

MLS Number: A11458328

Condo / Town Home

950 Brickell Bay Dr Unit 1710, Miami, Florida 33131 USA

Beds: 2

Baths: 2

Half Baths: 1

Living Area: 1,278

Unit: 1710

HOA Fees: \$900

Year Built: 2008

Community: THE PLAZA 851 BRICKELL CO

Subdivision: THE PLAZA 851 BRICKELL CO

ABOUT THIS PROPERTY

A beautiful corner unit in a Building in the Brickell Area is centrally located. Spacious unit with great layout 2bed/2.5 bath, floor-to-ceiling windows. Beautiful views of the bay and Brickell Key Island. The building features a fitness center, clubroom, business center, Theatre room, two pools, Spa, and jacuzzi. The building is pet-friendly. Walking distance to Brickell City Center, Mary Brickell Villages, Shops, Banks, Restaurants, Pharmacy, and Publix. Only 15 minutes without traffic from the Miami Int. Airport and Port of Miami. Transportation is also available Metro mover ride free, Metrorail, trolly. Come see it. Appointments 48 hours in advance.

