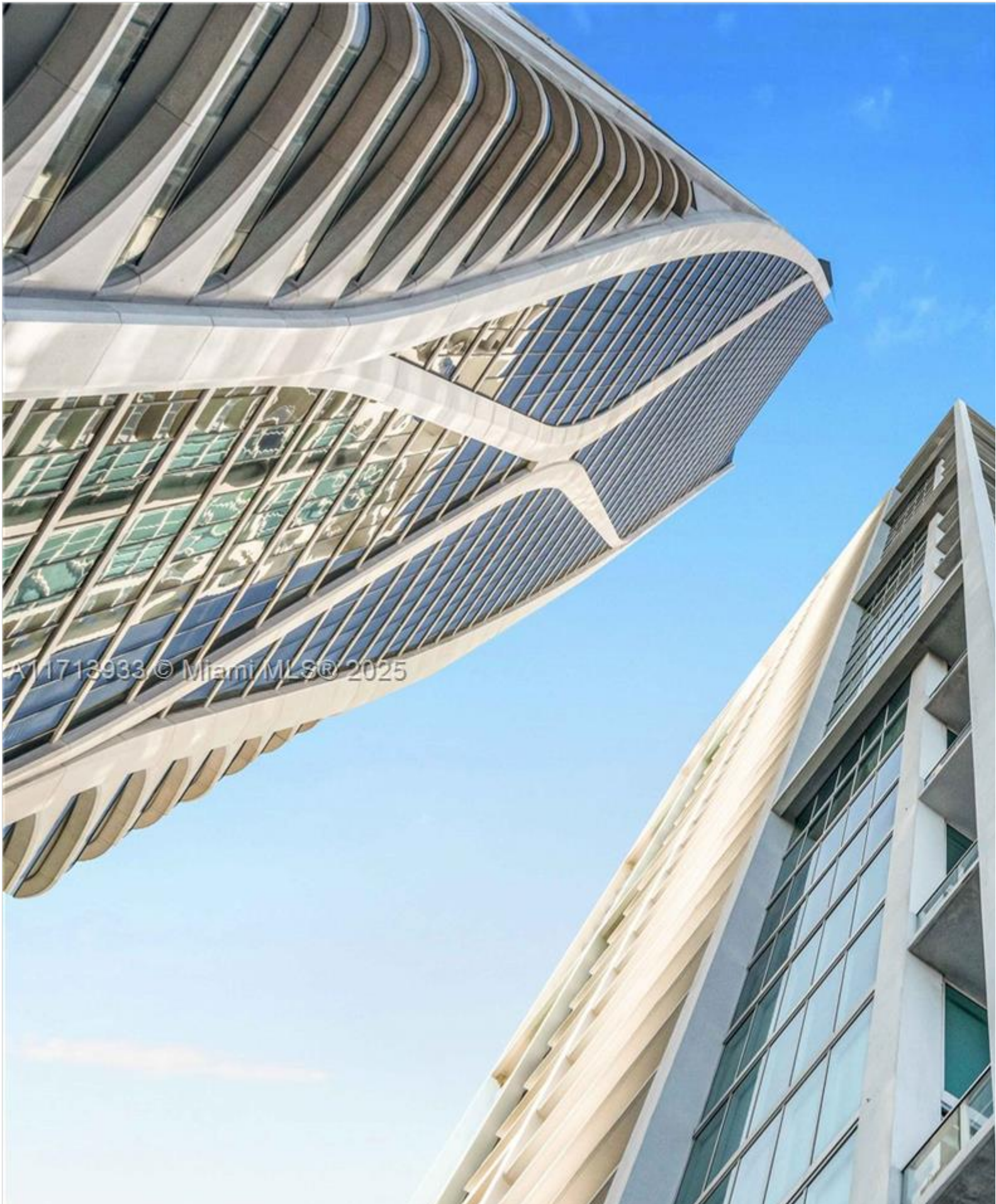


INES FLAX

YOUR PREMIER OCEANFRONT SPECIALIST
& MOST TRUSTED NAME IN SOUTH FLORIDA REAL ESTATE.





Price: \$1,999,999			MLS Number: A11713933			Condo / Town Home		
1040 Biscayne Blvd Unit LPH4407, Miami, Florida 33132 USA								
Beds: 3			Baths: 3			Half Baths: 1		
Living Area: 2,566			Unit: LPH4407			HOA Fees: \$4,029		
Year Built: 2007								
Community: TEN MUSEUM PK RESIDENTIAL					Subdivision: TEN MUSEUM PK RESIDENTIAL			

ABOUT THIS PROPERTY

Imagine waking up to stunning cityscapes & winding down w mesmerizing sunsets from one of your three private terraces. This luxury lifestyle. Spanning three dramatic levels with 20-ft ceilings and floor-to-ceiling glass windows, this residence is Boudreau, the sky home is the pinnacle of warmth, creativity & comfort. Enjoy the Bentley Bay Beach Club membership. The neighborhood w close proximity to PAMM, The Arsht Center for the performing arts, The Kaseya Center

