

INES FLAX

YOUR PREMIER OCEANFRONT SPECIALIST
& MOST TRUSTED NAME IN SOUTH FLORIDA REAL ESTATE.

ONE Sotheby's International Realty
119 Washington Ave Suite 33139

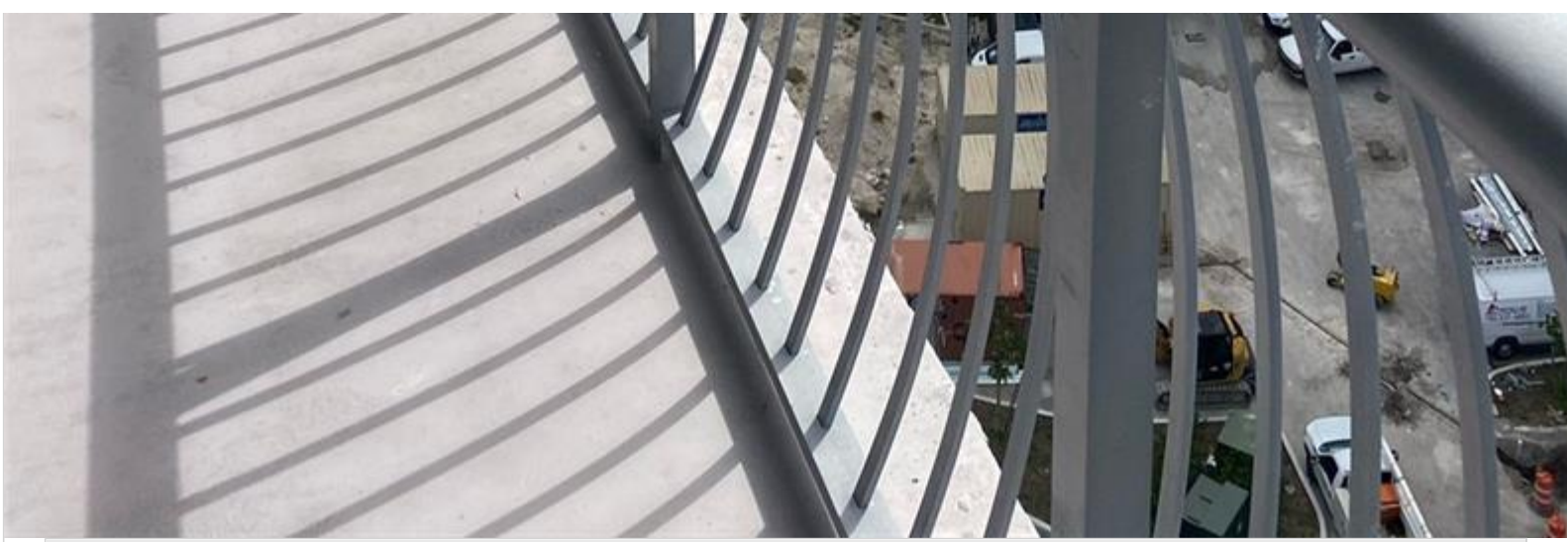
Phone: 786.218.7600 -

<http://www.inesflax.com>

Email: InesFlax@aol.com



A11764803 © Miami MLS © 2025



Price: \$375,000

MLS Number: A11764803

Condo / Town Home

1750 N Bayshore Dr Unit 1606, Miami, Florida 33132 USA

Beds: 1

Baths: 1

Living Area: 821

Unit: 1606

HOA Fees: \$960

Waterfront: YES

Year Built: 2007

Community: OPERA TOWER CONDO

Subdivision: OPERA TOWER CONDO

Elementary School: Wheatley; Phyllis

Junior High: de Diego; Jose

High School: Washington; Brooker T

ABOUT THIS PROPERTY

Motivated Owner! Discover this fantastic 1 bedroom, 1 bathroom apartment featuring magnificent city views and partial water views. This spacious unit boasts granite countertops, stainless steel appliances, and an in-unit washer and dryer for your convenience. Recently updated, the unit features brand new warm, easy-to-maintain vinyl flooring in the living room and kitchen, adding a modern touch to the space. Situated in the vibrant Edgewater neighborhood, Opera Tower offers breathtaking views of Biscayne Bay and the iconic Miami skyline. This property is ideal for investors, with one assigned parking space included. Rent is \$2450 until Dec 2025.

