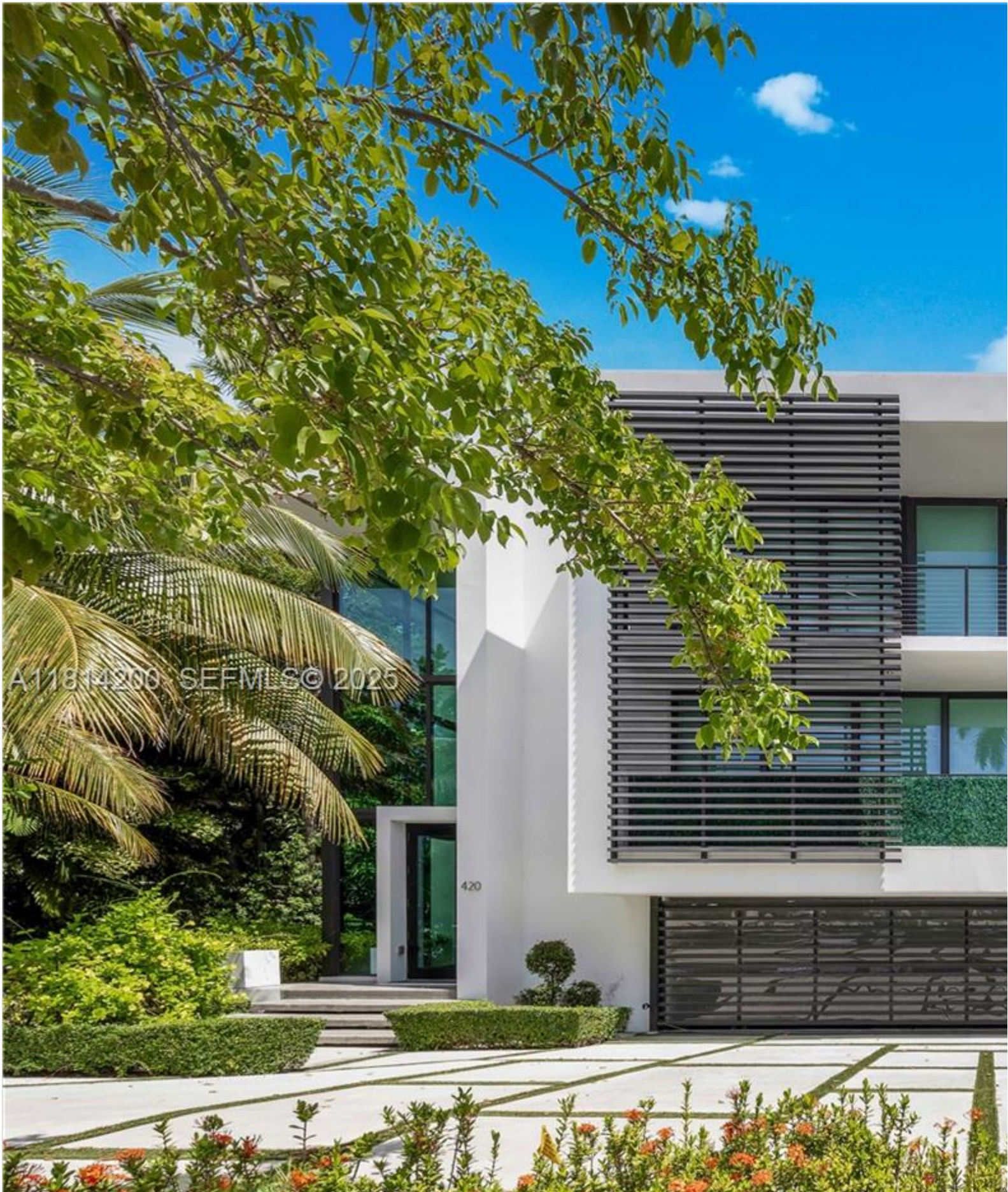


INES FLAX

YOUR PREMIER OCEANFRONT SPECIALIST
& MOST TRUSTED NAME IN SOUTH FLORIDA REAL ESTATE.





Price: \$9,400,000			MLS Number: A11814200			Single Family				
420 N Hibiscus Dr, Miami Beach, Florida 33139 USA										
Beds: 5			Baths: 6			Half Baths: 1				
Living Area: 5,642			Lot Square Feet: 10,387			HOA Fees:				
Year Built: 2019										
Community: HIBISCUS ISLAND					Subdivision: HIBISCUS ISLAND					
Elementary School: South Pointe					Junior High: Nautilus					
High School: Miami Beach										

ABOUT THIS PROPERTY

A modern masterpiece by award-winning architect Ralph Choeff, located on the coveted, guard-gated Hibiscus Island, this property features a full second floor with custom oak floors. Natural light fills the open layout, blending indoor and outdoor living. The sleek Mia Cucina kitchen features a custom island with a built-in oven and a full suite of appliances. The primary suite includes a custom walk-in closet and a full bathroom. The property is situated on a large lot with a private pool and a full suite of outdoor amenities. This is an exceptional value in one of Miami Beach's most exclusive enclaves.

