

# INES FLAX

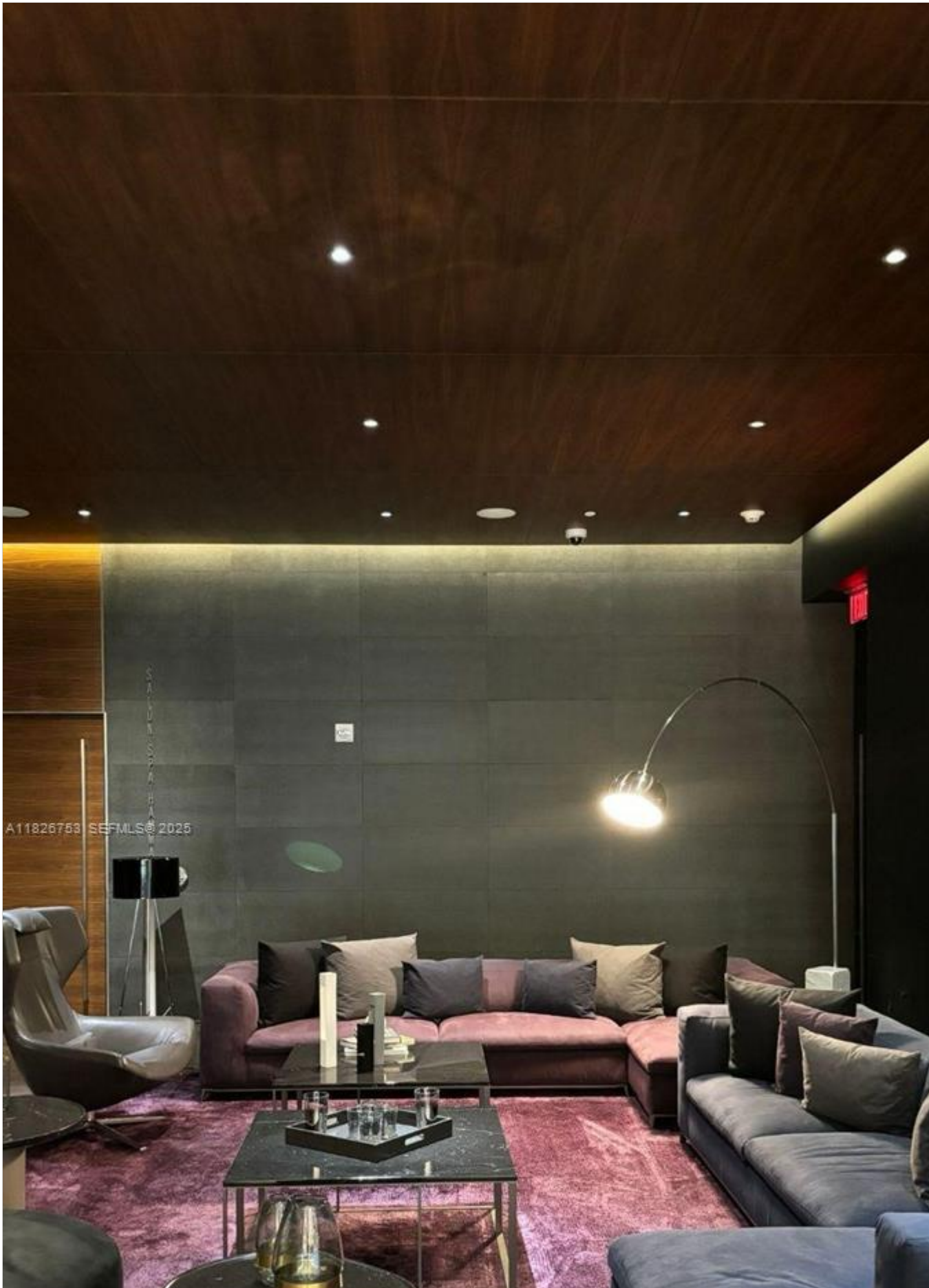
YOUR PREMIER OCEANFRONT SPECIALIST  
& MOST TRUSTED NAME IN SOUTH FLORIDA REAL ESTATE.

ONE Sotheby's International Realty  
119 Washington Ave Suite 300  
33139

Phone: 786.218.7600 - Cell: 786.218.7601

<http://www.inesflax.com>

Email: [InesFlax@aol.com](mailto:InesFlax@aol.com)





**Price:** \$1,495,000

**MLS Number:** A11826753

**Condo / Town Home**

**68 SE 6th St Unit 2804, Miami, Florida 33131 USA**

**Beds:** 3

**Baths:** 3

**Half Baths:** 1

**Living Area:** 1,660

**Unit:** 2804

**HOA Fees:** \$2,804

**Year Built:** 2016

**Community:** REACH CONDO

**Subdivision:** REACH CONDO

## ABOUT THIS PROPERTY

---

Best prices modern & stylish bed 3 bed, 3.5 bath residence at REACH brickell city Centre. Luxury condo designed by Arquitectonica with breathtaking water and city views from the 28th floor in the most prominent and chic destinations at the intersection of Brickell entertainment, business, and living. This unit is ready to move in, featuring lux finishes and many upgrades. It also counts with an additional den space that you can use as a TV room or office. Choose endless upscale enjoyment in a nearly one-acre amenity deck: heated pools, fitness center, grills, family fun, spa, salon, concierge, and more. This is your opportunity to live the most privileged and connected experience in the center of it.

Image