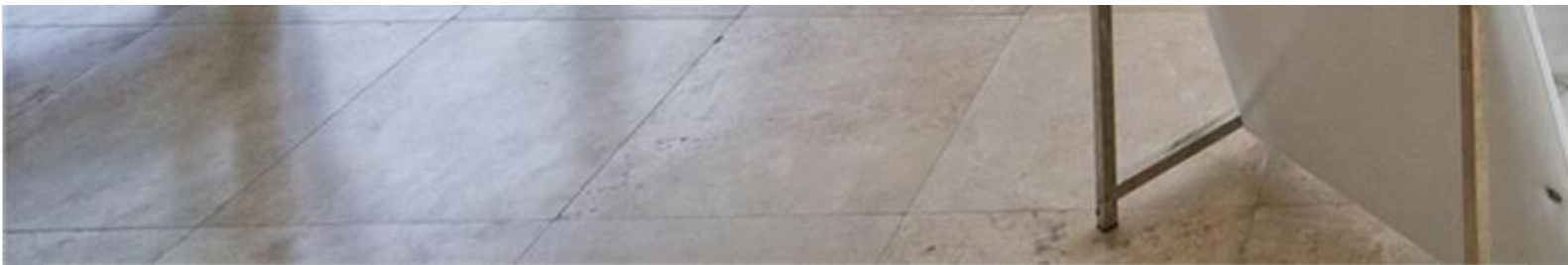


INES FLAX

YOUR PREMIER OCEANFRONT SPECIALIST
& MOST TRUSTED NAME IN SOUTH FLORIDA REAL ESTATE.





Price: \$1,330,000			MLS Number: A11861440			Condo / Town Home		
485 Brickell Ave Unit 4710, Miami, Florida 33131 USA								
Beds: 2			Baths: 2			Living Area: 1,347		
Unit: 4710			HOA Fees: \$1,700			Waterfront: YES		
Year Built: 2009								
Community: ICON BRICKELL CONDO NO 3					Subdivision: ICON BRICKELL CONDO NO 3			
Elementary School: Southside					Junior High: Shenandoah			

ABOUT THIS PROPERTY

CORNER UNIT HIGH FLOOR BEST FLOOR PLAN!!Stunning Bay Views from 47TH Floor "C" Line Unit. Best Line in
Deck, W Restaurant, 2-acre pool deck and much more! BRAND NEW AIR/C THE UNIT CAN BE RENTED DAILY , \

