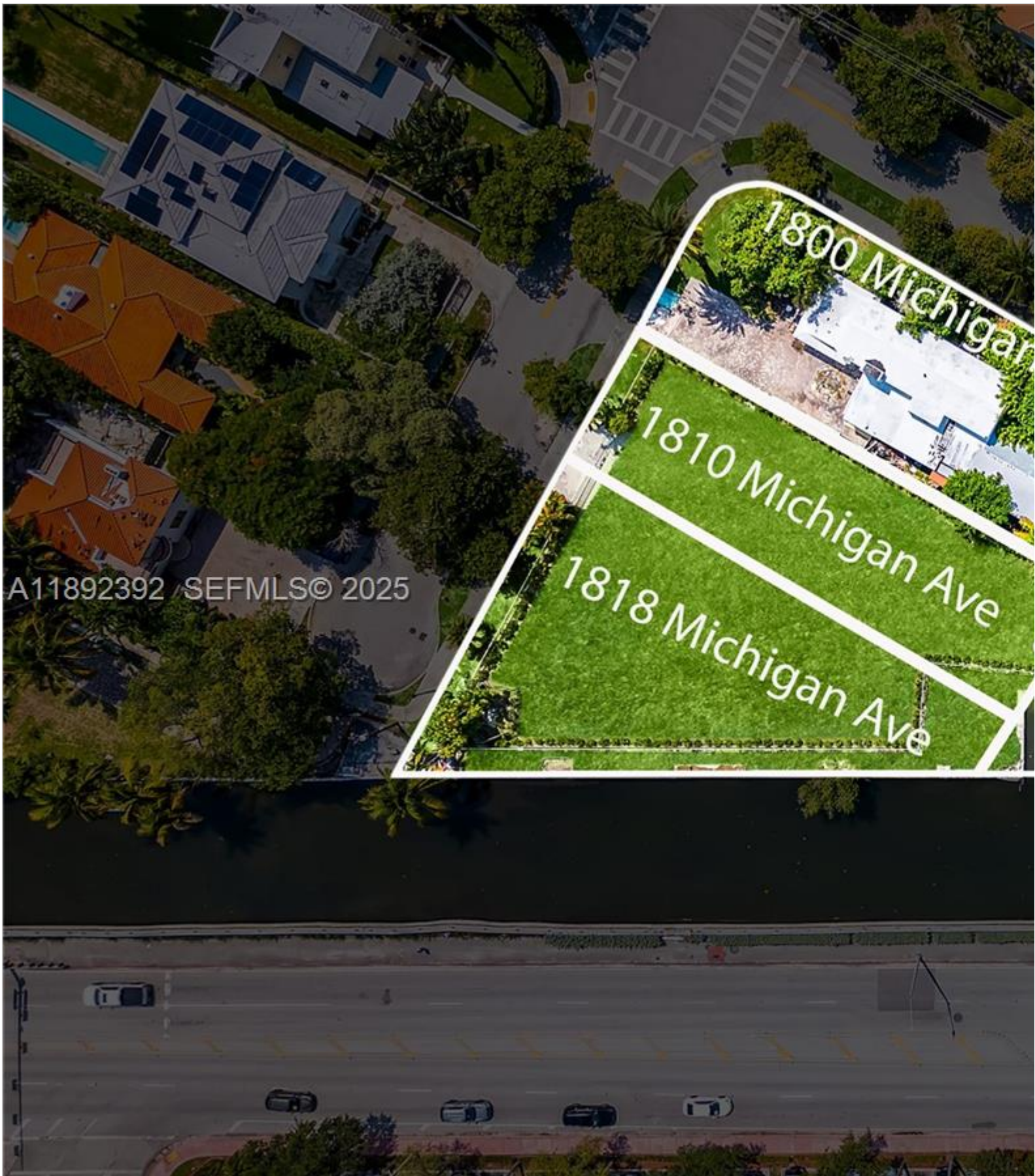


# INES FLAX

YOUR PREMIER OCEANFRONT SPECIALIST  
& MOST TRUSTED NAME IN SOUTH FLORIDA REAL ESTATE.



Price: \$8,999,999

MLS Number: A11892392

Single Family

1800 Michigan Ave, Miami Beach, Florida 33139 USA

<b>Beds:</b> 5	<b>Baths:</b> 5	<b>Living Area:</b> 4,092
<b>Lot Square Feet:</b> 37,183	<b>HOA Fees:</b>	<b>Waterfront:</b> YES
<b>Year Built:</b> 1935		
<b>Community:</b> PALM VIEW SUB	<b>Subdivision:</b> PALM VIEW SUB	
<b>Junior High:</b> Nautilus	<b>High School:</b> Miami Beach	

## ABOUT THIS PROPERTY

---

A truly rare opportunity to acquire 4 large residential lots in the highly desirable and historical Palm View neighborhood for single-family homes. This is a 4-folio sale, property includes 3 vacant lots and 1 lot with an existing structure, already occupied by a single-family home. Walking distance to Trader Joe's and Publix. Short bike ride to Ocean Drive and beach. This is a unique development opportunity, appointment only, with 24-hour notice. Priced to sell. This opportunity will not last.

