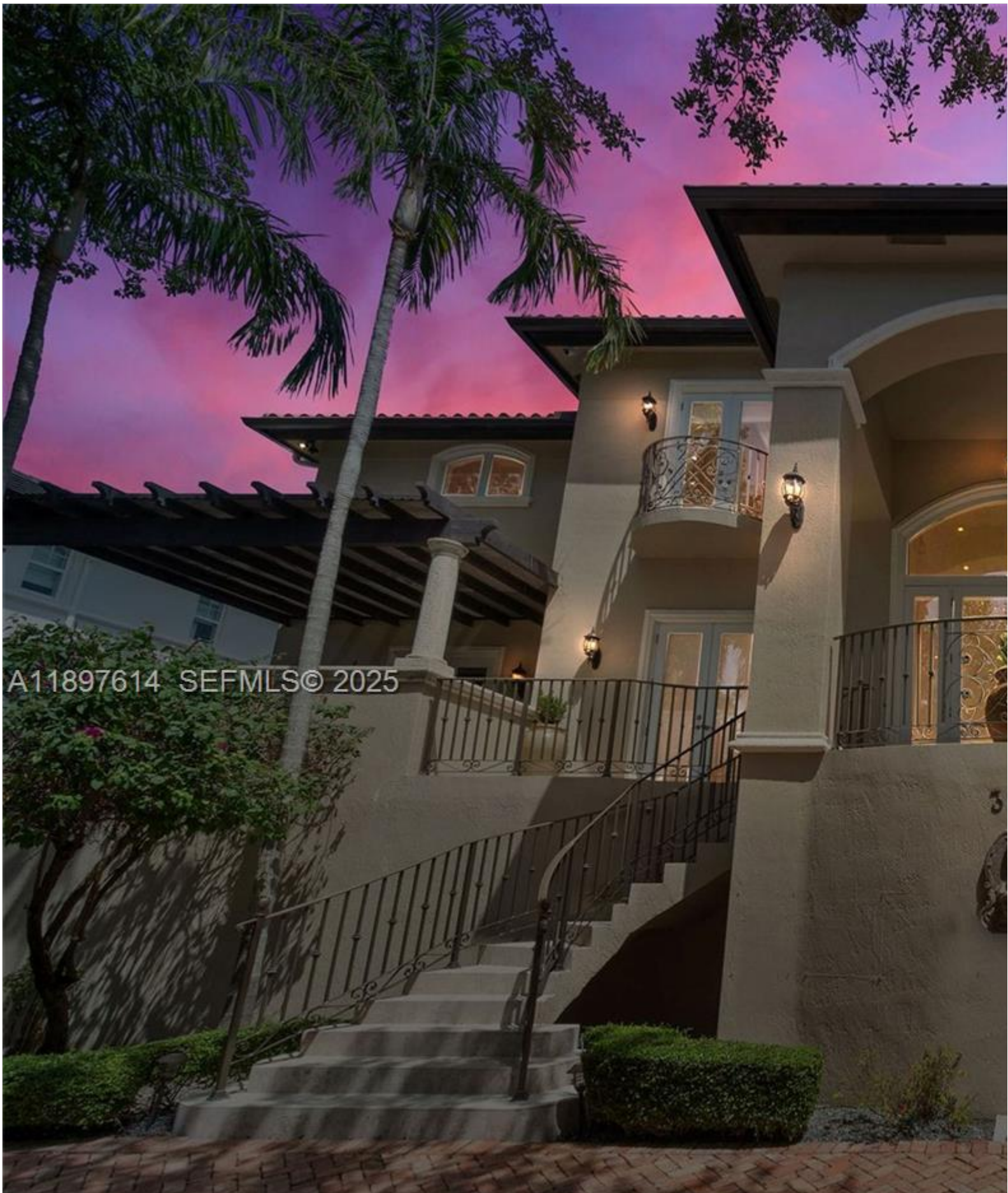


INES FLAX

YOUR PREMIER OCEANFRONT SPECIALIST
& MOST TRUSTED NAME IN SOUTH FLORIDA REAL ESTATE.



A11897614 SEFMLS© 2025



Price: \$8,895,000

MLS Number: A11897614

Single Family

3601 Matheson Ave, Miami, Florida 33133 USA

Beds: 6

Baths: 7

Half Baths: 1

Living Area: 8,933

Lot Square Feet: 15,015

HOA Fees:

Year Built: 2002

Community: KLEBBA BAY ESTATES

Subdivision: KLEBBA BAY ESTATES

Elementary School: Coconut Grove

Junior High: Ponce De Leon

High School: Coral Gables

ABOUT THIS PROPERTY

Situated within 24/7 guard-gated Entrada Estates, this Grove estate balances scale, function, and flexibility. Total area includes office, family room, and 3-car garage. All outlets sit above flood lines with a lift/pump station; primary insurable living units. Features include elevator, 26 cameras, mosquito misting system, 8' solid-core doors, marble & Brazilian cherry, downtown Coconut Grove, marinas, tennis court, and daily dockage within the community.

