

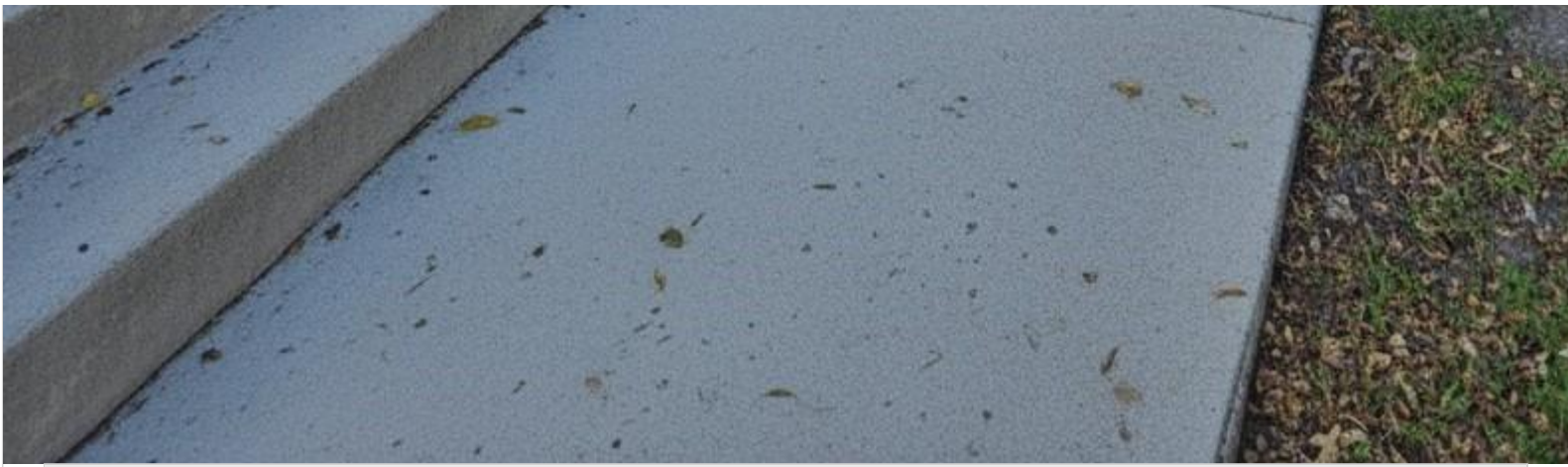
# INES FLAX

YOUR PREMIER OCEANFRONT SPECIALIST  
& MOST TRUSTED NAME IN SOUTH FLORIDA REAL ESTATE.

ONE Sotheby's International Realty  
119 Washington Ave Suite 200  
Phone: - Fax: (305) 691-1111  
<http://www.inesflax.com>  
Email: [inesflax@gmail.com](mailto:inesflax@gmail.com)



A11902227 SEFMLS© 2025



Price: \$283,000		MLS Number: A11902227		Condo / Town Home	
9241 SW 138th PI Unit 9241, Miami, Florida 33186 USA					
Beds: 2		Baths: 1		Living Area: 1,045	
Unit: 9241		HOA Fees: \$493		Year Built: 1987	
Community: PARC VISTA CONDO			Subdivision: PARC VISTA CONDO		
Elementary School: Pepper; Claude			Junior High: Hammocks		
High School: Miami Sunset					

## ABOUT THIS PROPERTY

---

Charming 2/1 first-floor condo in Parc Vista with garden views. Bright open layout with wood cabinets, new appliances, washer and dryer, tile floors, and fresh paint. New A/C (2021) and ceiling fans throughout. Enjoy a private patio, assigned parking, and 24-hour security. Community offers 2 pools, spa, gym, and tennis/volleyball courts. HOA includes exterior insurance, water, sewer, and trash. Convenient location near shops, dining, schools, hospitals, and highways.

