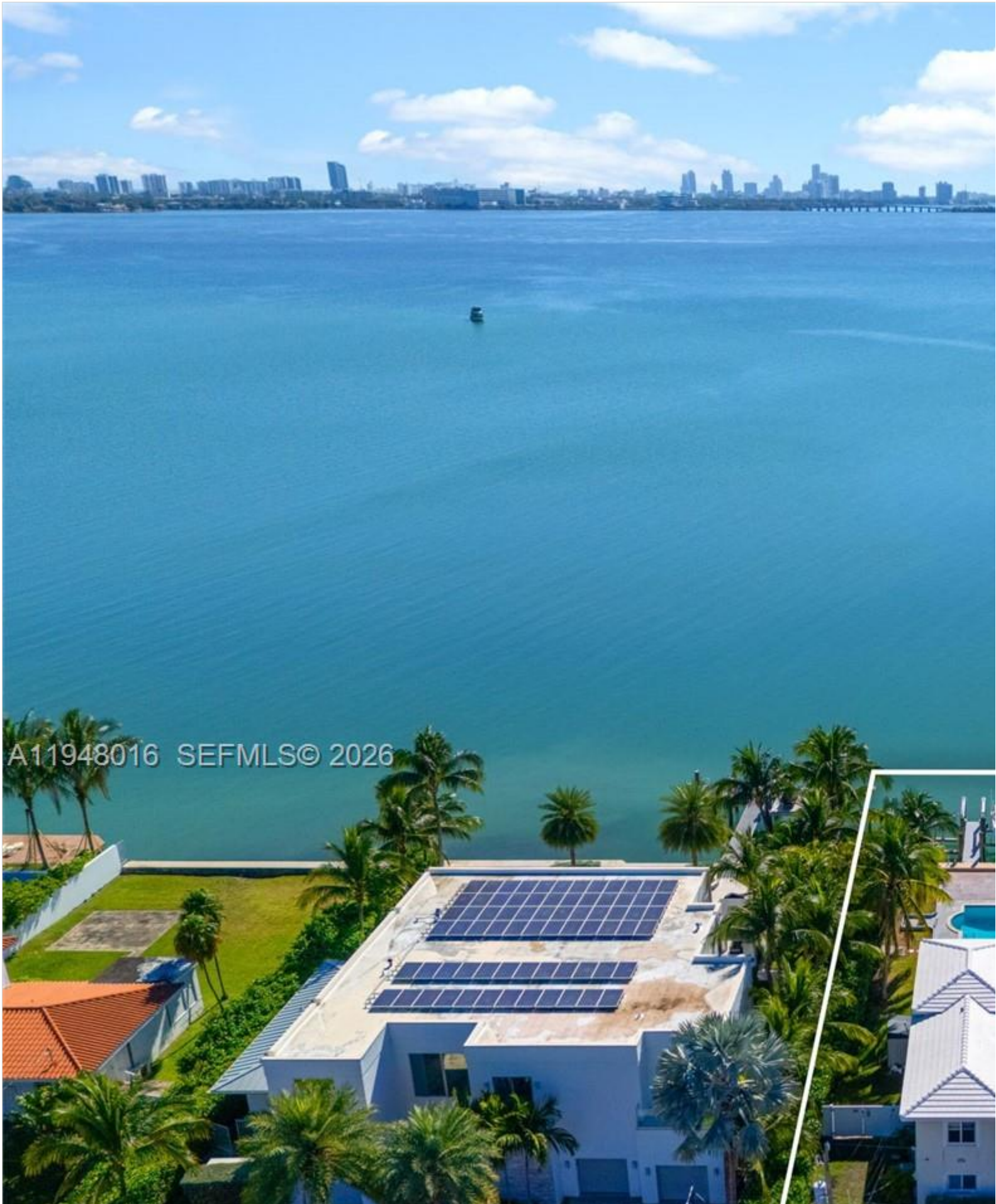
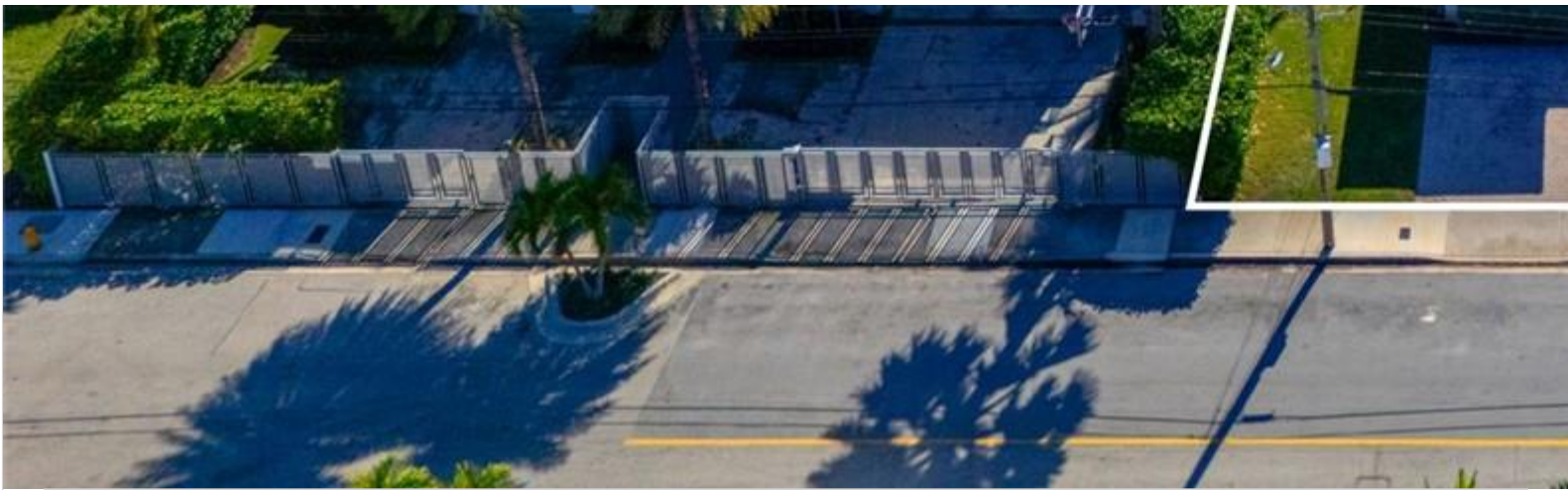


INES FLAX

YOUR PREMIER OCEANFRONT SPECIALIST
& MOST TRUSTED NAME IN SOUTH FLORIDA REAL ESTATE.



A11948016 SEFMLS© 2026



Price: \$6,250,000		MLS Number: A11948016		Single Family	
1510 S Treasure Dr, North Bay Village, Florida 33141 USA					
Beds: 4		Baths: 3		Living Area: 2,669	
Lot Square Feet: 10,500		HOA Fees:		Waterfront: YES	
Year Built: 1950					
Lot Dimensions: 10500		Community: TREASURE ISLAND			
Subdivision: TREASURE ISLAND					
Elementary School: Treasure Island		Junior High: Nautilus			
High School: Miami Beach					

ABOUT THIS PROPERTY

Experience wide, unobstructed, and extraordinary panoramic open-bay views of both the Miami and Miami Beach skyline from this property. Located on the corner of Biscayne and Treasure Drive, this property offers what discerning buyers and boaters value most: true direct ocean access with a seawall (2018), new roof, and exceptional redevelopment potential. Boating enthusiasts will appreciate the two boat slips. Situated in a prime location, surrounded by trophy waterfront estates and ongoing luxury redevelopment, inventory along this water line is increasingly rare. With 180-degree unobstructed water vistas, and a lifestyle defined by views, access, and exclusivity. Just minutes from Miami's premier waterfront position in one of Miami's fastest-rising island neighborhoods. A rare offering. A lasting investment opportunity.

