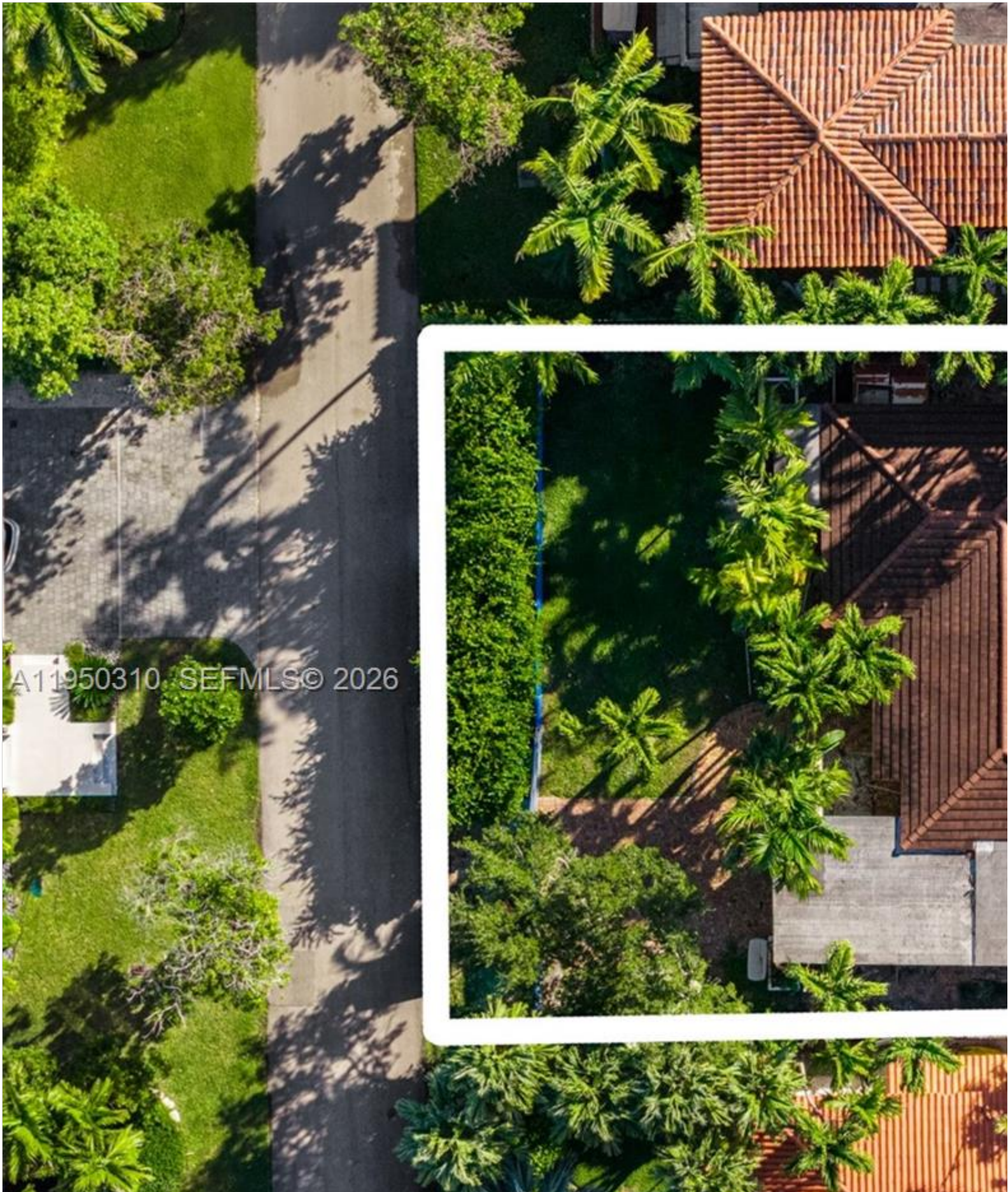


# INES FLAX

YOUR PREMIER OCEANFRONT SPECIALIST  
& MOST TRUSTED NAME IN SOUTH FLORIDA REAL ESTATE.



A11950310 SEFMLS© 2026





Price: \$2,950,000		MLS Number: A11950310		Single Family	
760 Allendale Road, Key Biscayne, Florida 33149 USA					
Beds: 3		Baths: 2		Living Area: 2,388	
Lot Square Feet: 7,500		HOA Fees:		Year Built: 1950	
Community: BISCAYNE KEY ESTATES			Subdivision: BISCAYNE KEY ESTATES		
Elementary School: Keybiscayne			Junior High: Ponce De Leon		
High School: Coral Gables					

## ABOUT THIS PROPERTY

---

An exceptional opportunity to build your dream home on a prime lot along desirable Allendale Road in the heart of Key Biscayne, offering custom luxury living. Enjoy the unique island lifestyle that makes Key Biscayne so special, with its pristine beaches, for its strong sense of community and family-friendly atmosphere, Key Biscayne offers a safe, welcoming environment. As one of Miami's most sought-after communities, combining tranquility, convenience, and an exceptional quality of life.

