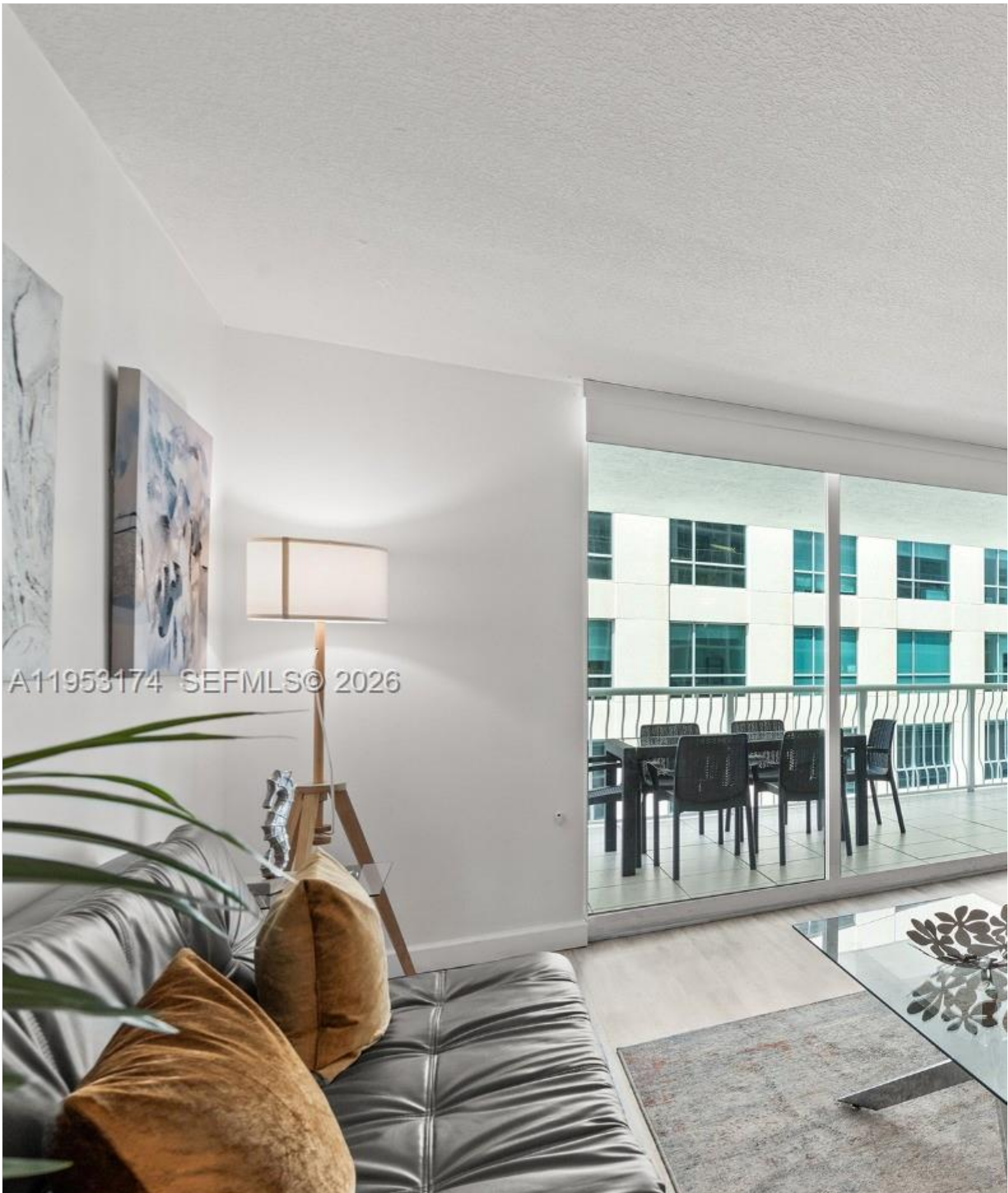


# INES FLAX

YOUR PREMIER OCEANFRONT SPECIALIST  
& MOST TRUSTED NAME IN SOUTH FLORIDA REAL ESTATE.





<b>Price: \$565,000</b>		<b>MLS Number:</b> A11953174	<b>Condo / Town Home</b>
<b>1200 Brickell Bay Dr Unit 2414, Miami, Florida 33131 USA</b>			
<b>Beds:</b> 2	<b>Baths:</b> 1		<b>Living Area:</b> 818
<b>Unit:</b> 2414	<b>HOA Fees:</b> \$700		<b>Waterfront:</b> YES
<b>Year Built:</b> 2004			
<b>Community:</b> THE CLUB AT BRICKELL BAY		<b>Subdivision:</b> THE CLUB AT BRICKELL BAY	
<b>Elementary School:</b> Southside		<b>Junior High:</b> Shenandoah	

## ABOUT THIS PROPERTY

---

Great Investment opportunity in the heart of Brickell!!! One of the most desirable short-term rental-friendly buildings!! seeking immediate income potential. Prime location close to excellent restaurants, ultimate Brickell lifestyle just steps away. FINANCING AVAILABLE!!

