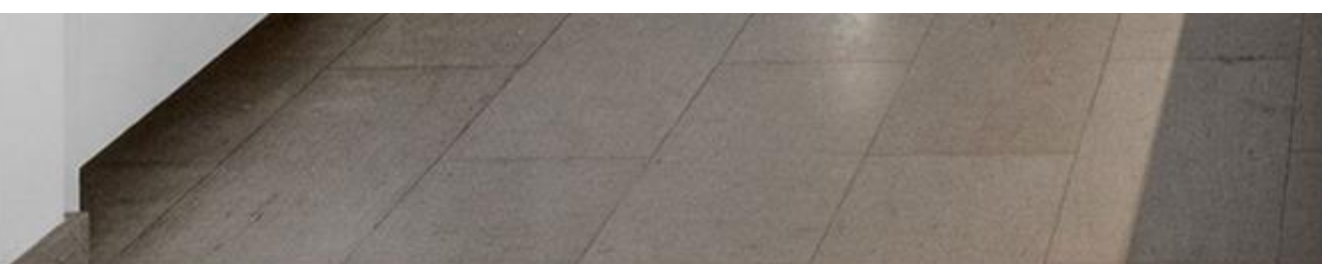


# INES FLAX

YOUR PREMIER OCEANFRONT SPECIALIST  
& MOST TRUSTED NAME IN SOUTH FLORIDA REAL ESTATE.



A11964013 SEFMLS © 2026



**Price: \$1,100,000**

**MLS Number: A11964013**

**Condo / Town Home**

**68 SE 6th St Unit 1702, Miami, Florida 33131 USA**

**Beds: 2**

**Baths: 2**

**Half Baths: 1**

**Living Area: 1,265**

**Unit: 1702**

**HOA Fees: \$2,138**

**Year Built: 2016**

**Community: REACH CONDO**

**Subdivision: REACH CONDO**

## ABOUT THIS PROPERTY

---

Motivated seller! Beautiful 2 bed 2.5 bath corner unit w/ wide wraparound balcony right on top of Brickell City Centre WholeFoods|Publix,outdoor Mary Brickell Village mall,bus|free Metromover stations & so much more. Just a ride away with marble floors,Italian cabinetry,quartz kitchen countertop,wine cooler, stainless steel appliances,washer & dryer,full bathroom,custom walk-in closets,sheer window blinds throughout the unit plus blackouts in the bedrooms.Furniture & appliances fee incl.TV cable,Internet,garage parking spot(extras avail.) & all amenities that Reach has to offer. Relax at the heated pool,spa,fitness room,garden BBQ area,large 24/7 fitness center w/ studio,unique kids indoor playroom & outdoor playground,24/7 bus parking.No short-term rentals. 2pets max.50lb.Live a private high-end residential lifestyle in the center of Miami!

PROPERTY  
LOCATION

---

Image

