

# INES FLAX

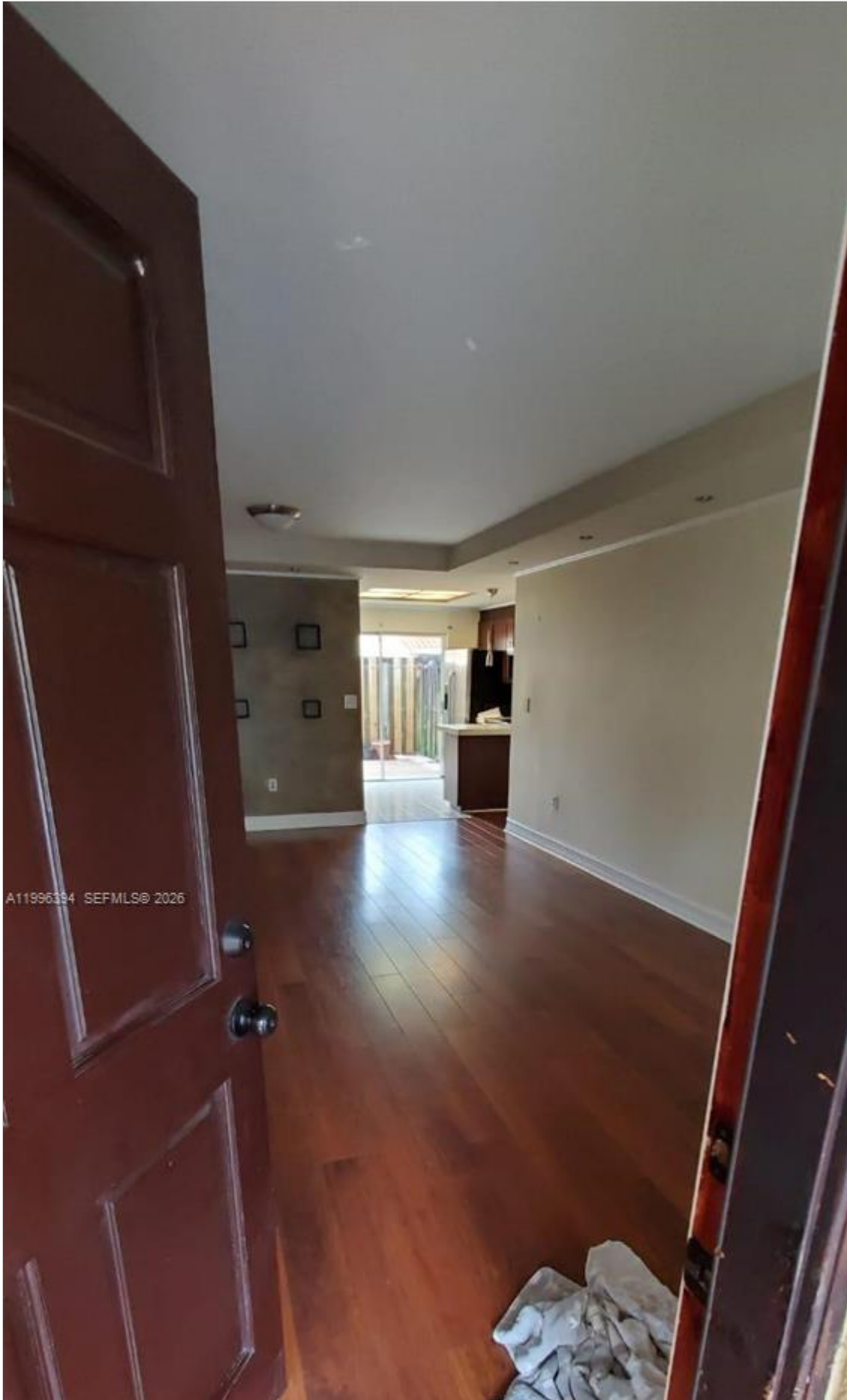
YOUR PREMIER OCEANFRONT SPECIALIST  
& MOST TRUSTED NAME IN SOUTH FLORIDA REAL ESTATE.

ONE Sotheby's Internatio  
119 Washington Ave Sui  
33139

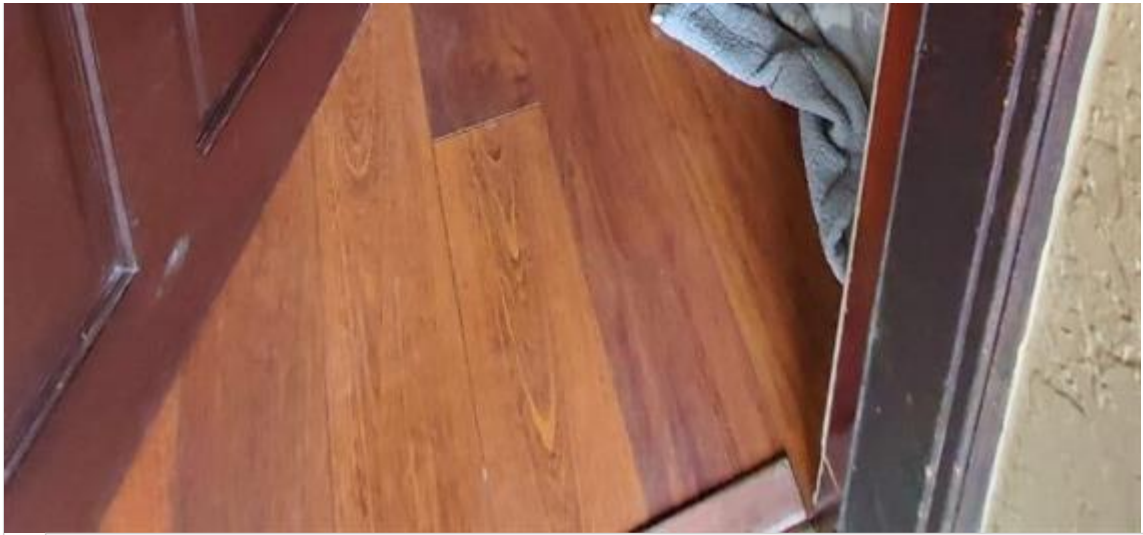
Phone: 786.218.7600 -

<http://www.inesflax.com>

Email: InesFlax@aol.com



A11996334 SEFMLS® 2026



**Price: \$349,000**

**MLS Number: A11996394**

**Condo / Town Home**

**7010 NW 173rd Dr Unit 1901, Hialeah, Florida 33015 USA**

**Beds: 2**

**Baths: 2**

**Living Area: 1,020**

**Unit: 1901**

**HOA Fees: \$320**

**Year Built: 1991**

**Community: LAGO DEL REY CONDO**

**Subdivision: LAGO DEL REY CONDO**

## ABOUT THIS PROPERTY

---

Beautifully remodeled 2-bedroom, 2-bath first-floor condo in the gated community of Lago del Rey! This move-in-ready home features a fully updated kitchen with rich wood cabinetry and stone countertops, seamlessly connecting to the living area with elegant laminate wood flooring throughout. The social area stands out with a specially designed ceiling detail in the living room, thoughtfully created to enhance the lighting and create a warm, inviting ambiance. The primary bedroom offers a comfortable layout with a spacious walk-in closet. Natural light flows nicely across the space, adding to the home's overall warmth. Step outside to your private patio with an independent entrance finished with a combination of concrete slab and tile for easy maintenance. Perfect for relaxing or entertaining without extra upkeep. Additional highlights include convenient in-unit laundry, dedicated storage space, and two assigned parking spaces right in front of the unit. Enjoy a peaceful, well-maintained gated community with amenities such as a sparkling pool and picnic area. Ideally located near Miami Lakes and Palm Springs North. 40-Year Certification completed – No special assessments. Pet-friendly (max 20 lbs). Showings by appointment: Saturday after 12 PM. SHOWINGS: MONDAY / WEDNESDAY / FRIDAY AFTER 7PM. TUESDAY / THURSDAY AFTER 1PM. SATURDAY AFTER 12PM. ALL SHOWINGS WITH PREVIOUS CONFIRMATION.

PROPERTY  
LOCATION

---

Image

