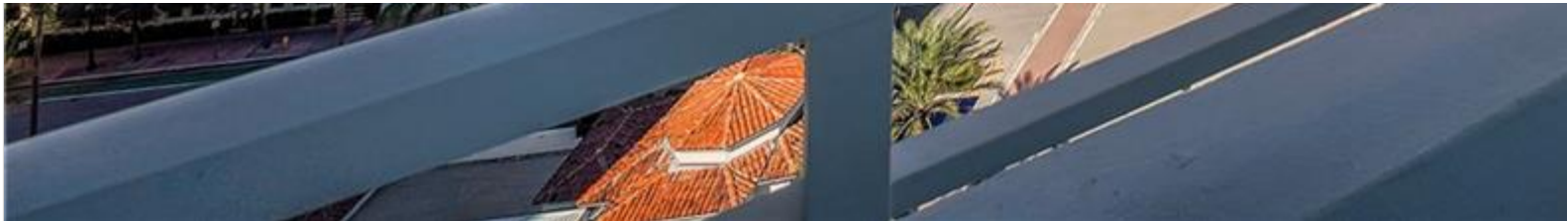


INES FLAX

YOUR PREMIER OCEANFRONT SPECIALIST
& MOST TRUSTED NAME IN SOUTH FLORIDA REAL ESTATE.



A12027699 SEFMLS © 2026



Price: \$2,750,000

MLS Number: A12027699

Condo / Town Home

400 S Pointe Dr Unit 2310, Miami Beach, Florida 33139 USA

Beds: 2

Baths: 2

Half Baths: 1

Living Area: 1,559

Unit: 2310

HOA Fees: \$2,968

Waterfront: YES

Year Built: 1987

Community: SOUTH POINTE TOWERS CONDO

Subdivision: SOUTH POINTE TOWERS CONDO

Elementary School: South Pointe

Junior High: Nautilus

High School: Miami Beach

ABOUT THIS PROPERTY

Extraordinary one-of-a-kind corner SKY LOFT at the iconic South Pointe Tower offers an unparalleled Miami Beach escape with panoramic views, scale, light + breathtaking views. Floor to ceiling glass walls frame sweeping vistas of the ocean, Government Cut, F Street, and the historic neighborhood. Carrara marble finishes + a spectacular 15-foot marble island anchoring the chef's kitchen—an entertainer's dream. The spa-inspired bathrooms are finished with Carrara marble. The location is unbeatable, offering spectacular sunrises, passing yachts + cruise ships, and glittering city lights. The spa-inspired bathrooms are finished with Carrara marble. In this neighborhood, residents enjoy direct access to South Pointe Park, world-class dining, marinas, pristine beaches, and more. Two indoor parking spaces included, with a location that further enhances one of South Florida's premier oceanfront addresses. Architecture, views + lifestyle converge to create an exceptional Miami Beach residence.

PROPERTY LOCATION

Image

