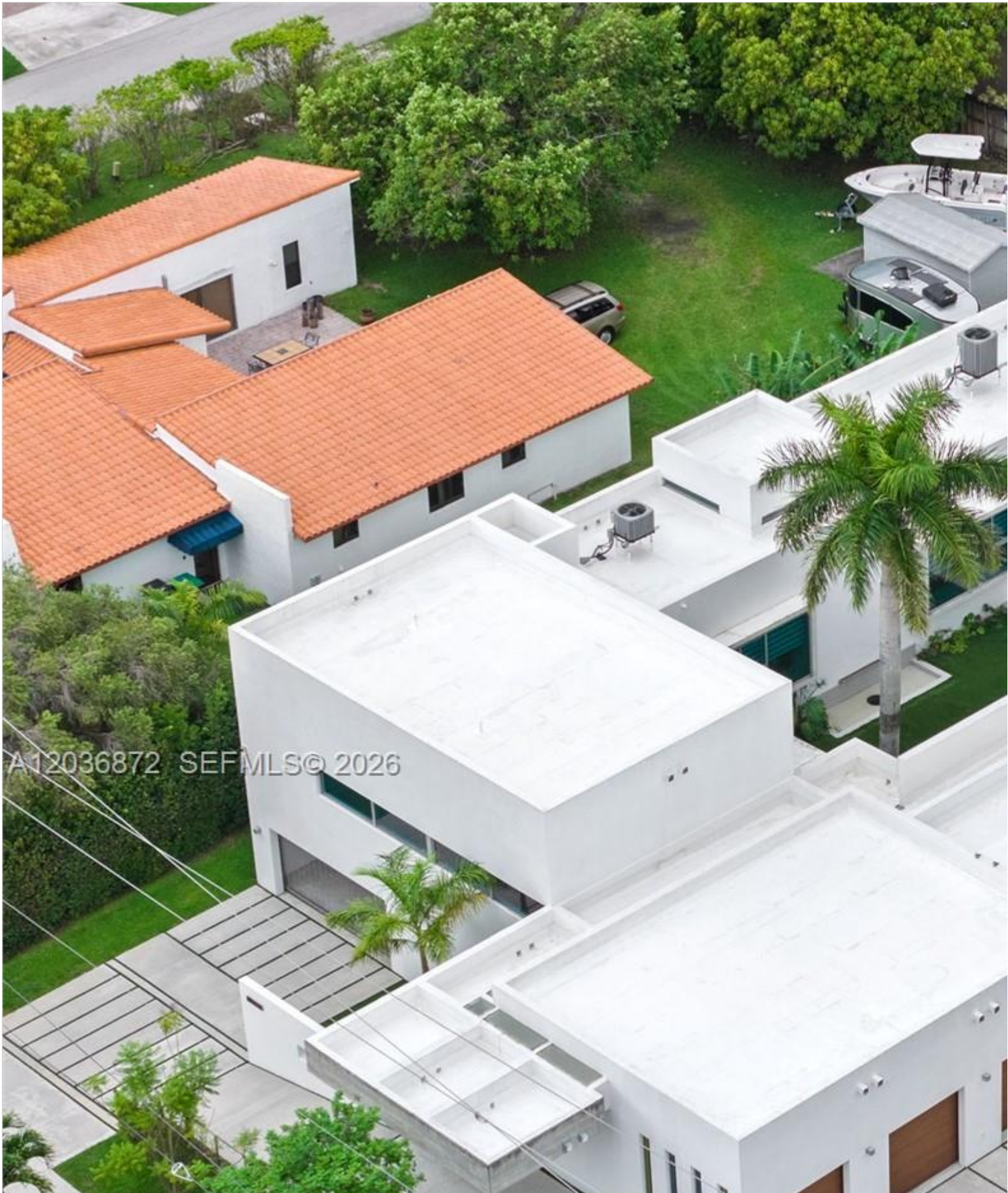


# INES FLAX

YOUR PREMIER OCEANFRONT SPECIALIST  
& MOST TRUSTED NAME IN SOUTH FLORIDA REAL ESTATE.





**Price: \$2,999,900**

**MLS Number: A12036872**

**Single Family**

**2360 SW 139th Ave, Miami, Florida 33175 USA**

**Beds: 6**

**Baths: 5**

**Half Baths: 1**

**Living Area: 4,146**

**Lot Square Feet: 20,909**

**HOA Fees:**

**Year Built: 2018**

**Lot Dimensions: 20909**

**Community: J G HEADS FARMS SUB**

**Subdivision: J G HEADS FARMS SUB**

**Elementary School: Hall; Joe**

**Junior High: Thomas; W.R.**

**High School: Braddock G. Holmes**

## ABOUT THIS PROPERTY

---

Privately commissioned and custom-built in 2018, this steel-and-concrete Architectural Estate is a rare expression of expansive, nearly half-acre homesite (20,909 SF), the residence is organized around a dramatic open-air central pavilion designed to balance connection and privacy, the floorplan features a private primary wing, separate guest and multi-glass, and refined contemporary finishes throughout. Expansive retractable glass walls dissolve the boundary between summer kitchen and event storage, and western exposures capturing beautiful South Florida sunsets. Equipped with space, circular motor court, covered carport, and parking accommodations for approximately 15 vehicles. A truly one-of-a-kind. Exceptional location in Miami's Western Coral Way corridor. There is no other in comparison.

# PROPERTY LOCATION

---

Image

