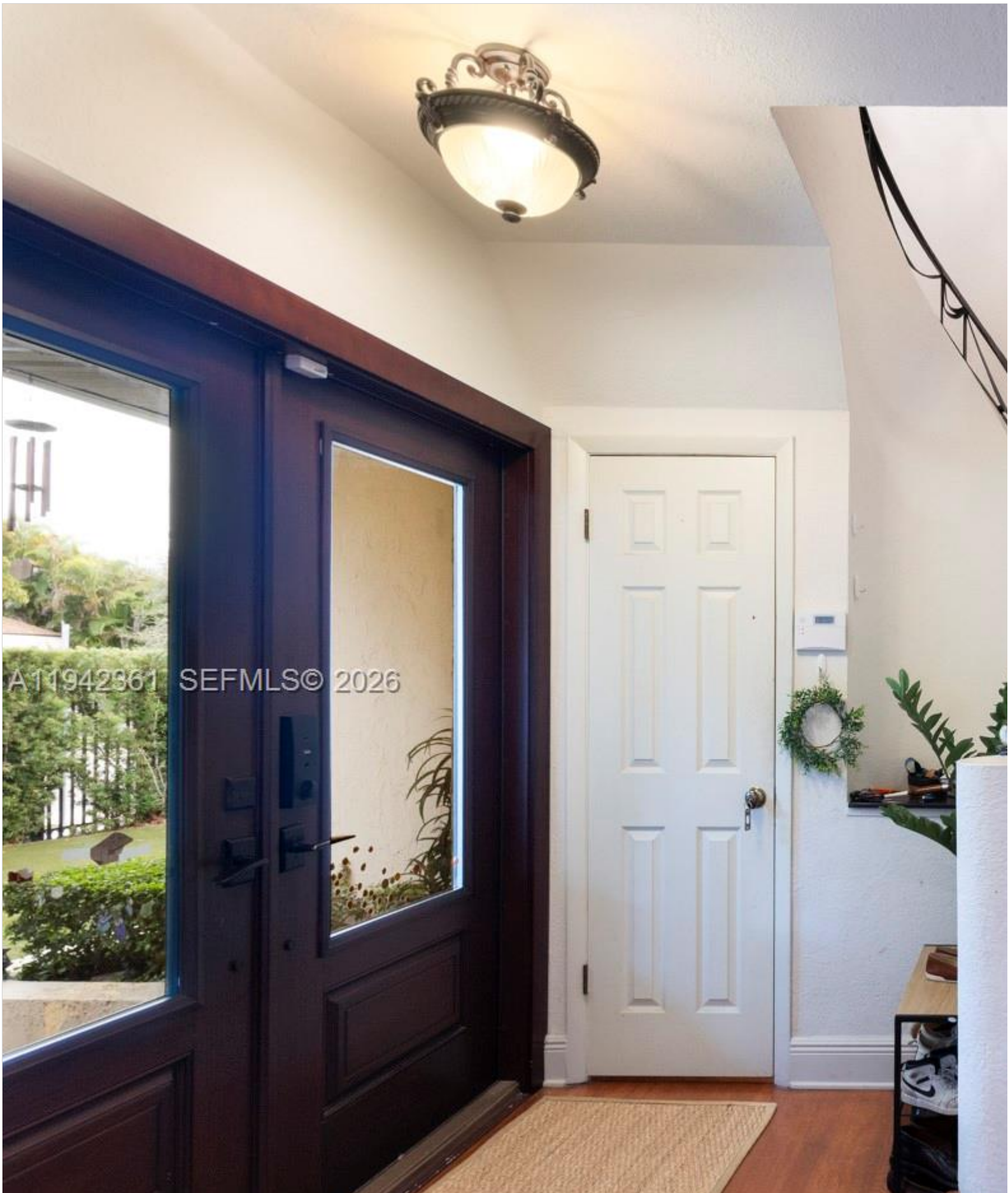


INES FLAX

YOUR PREMIER OCEANFRONT SPECIALIST
& MOST TRUSTED NAME IN SOUTH FLORIDA REAL ESTATE.





Price: \$2,499,000

MLS Number: A11942361

Single Family

360 SW 28th Rd, Miami, Florida 33129 USA

Beds: 5

Baths: 4

Living Area: 4,033

Lot Square Feet: 7,837

HOA Fees:

Year Built: 1948

Lot Dimensions: 7837

Community: BRICKELL ESTATES

Subdivision: BRICKELL ESTATES

Elementary School: Coral Way

Junior High: Shenandoah

High School: Miami Senior

ABOUT THIS PROPERTY

Located in The Roads, one of Miami's most desirable & centrally located neighborhoods, this 5-bedroom, 4-bath Spacious home features warm, inviting spaces & architectural details that are increasingly hard to find. A true rarity in The feel or premium pricing of newer construction. The family room showcases vaulted ceilings with beautiful exposed wood dining areas, two staircases, two fireplaces, & a spacious kitchen equipped with two dishwashers, ideal for hosting & large doors for added peace of mind. Outdoor living features a fully walled property for added privacy, multiple patios, lush landscaping positioned within walking distance to the Underline, Vizcaya, Brickell, & just minutes from Coconut Grove, Coral Gables connectivity throughout South Florida.

PROPERTY LOCATION

Image

