

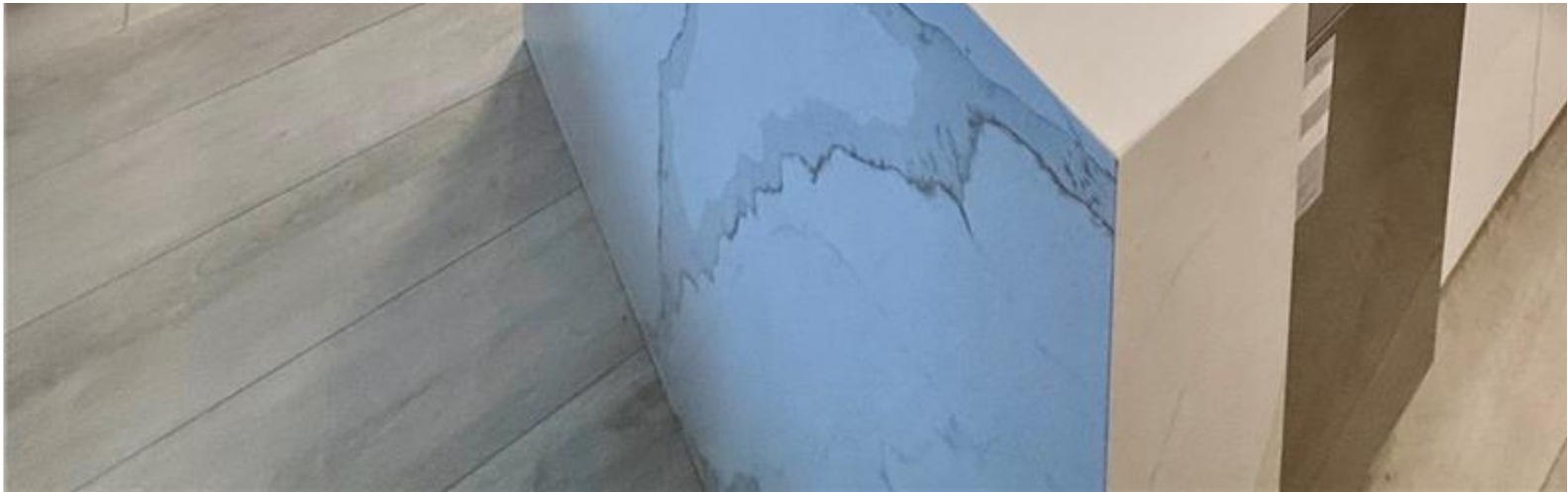
INES FLAX

YOUR PREMIER OCEANFRONT SPECIALIST
& MOST TRUSTED NAME IN SOUTH FLORIDA REAL ESTATE.

ONE Sotheby's Internatio
119 Washington Ave Sui
Phone: - Fax: (305) 69:
<https://www.inesflax.com>
Email:



A11957066 SEFMLS © 2026



Price: \$695,000

MLS Number: A11957066

Condo / Town Home

770 Claughton Island Dr Unit 1503, Miami, Florida 33131 USA

Beds: 2

Baths: 2

Living Area: 968

Unit: 1503

HOA Fees: \$1,893

Waterfront: YES

Year Built: 1990

Community: ISOLA CONDO

Subdivision: ISOLA CONDO

Elementary School: Southside

Junior High: Shenandoah

ABOUT THIS PROPERTY

Stunning 2BD/2BA Condo with Breathtaking Bay & City Views on Brickell Key! Fully renovated and furnished with iron and doors, new baths, sleek European-style kitchen, stainless steel appliances, tile plank floors, tons of natural light city and bay views. Features a split floor plan, 1 assigned parking space with availability for another, and new A/C. Excellent living with 24hr concierge, valet, tennis courts, heated pool & spa, waterfront gym, club room, business center & more. Location—walk to Brickell City Centre, top restaurants, and parks. Just minutes to highways, Downtown, and Miami

PROPERTY LOCATION

Image

