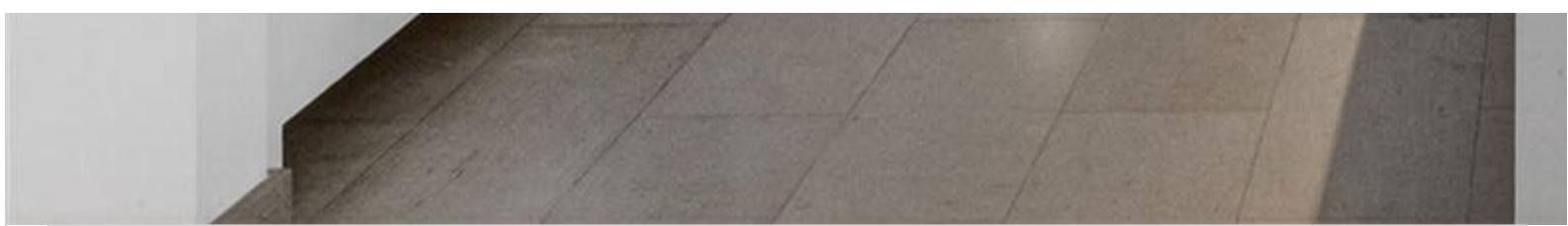


INES FLAX

YOUR PREMIER OCEANFRONT SPECIALIST
& MOST TRUSTED NAME IN SOUTH FLORIDA REAL ESTATE.



A11964013 SEFMLS© 2026



Price: \$1,100,000

MLS Number: A11964013

Condo / Town Home

68 SE 6th St Unit 1702, Miami, Florida 33131 USA

Beds: 2

Baths: 2

Half Baths: 1

Living Area: 1,265

Unit: 1702

HOA Fees: \$2,138

Year Built: 2016

Community: REACH CONDO

Subdivision: REACH CONDO

ABOUT THIS PROPERTY

Motivated seller! Beautiful 2 bed 2.5 bath corner unit w/ wide wraparound balcony right on top of Brickell City Centre WholeFoods|Publix,outdoor Mary Brickell Village mall,bus|free Metromover stations & so much more. Just a ride away with marble floors,Italian cabinetry,quartz kitchen countertop,wine cooler, stainless steel appliances,washer & dryer,full bathroom,custom walk-in closets,sheer window blinds throughout the unit plus blackouts in the bedrooms.Furniture & appliances fee incl.TV cable,Internet,garage parking spot(extras avail.) & all amenities that Reach has to offer. Relax at the heated pool,spa,fitness room,garden BBQ area,large 24/7 fitness center w/ studio,unique kids indoor playroom & outdoor playground,24/7 bus parking.No short-term rentals. 2pets max.50lb.Live a private high-end residential lifestyle in the center of Miami!

PROPERTY LOCATION

Image

