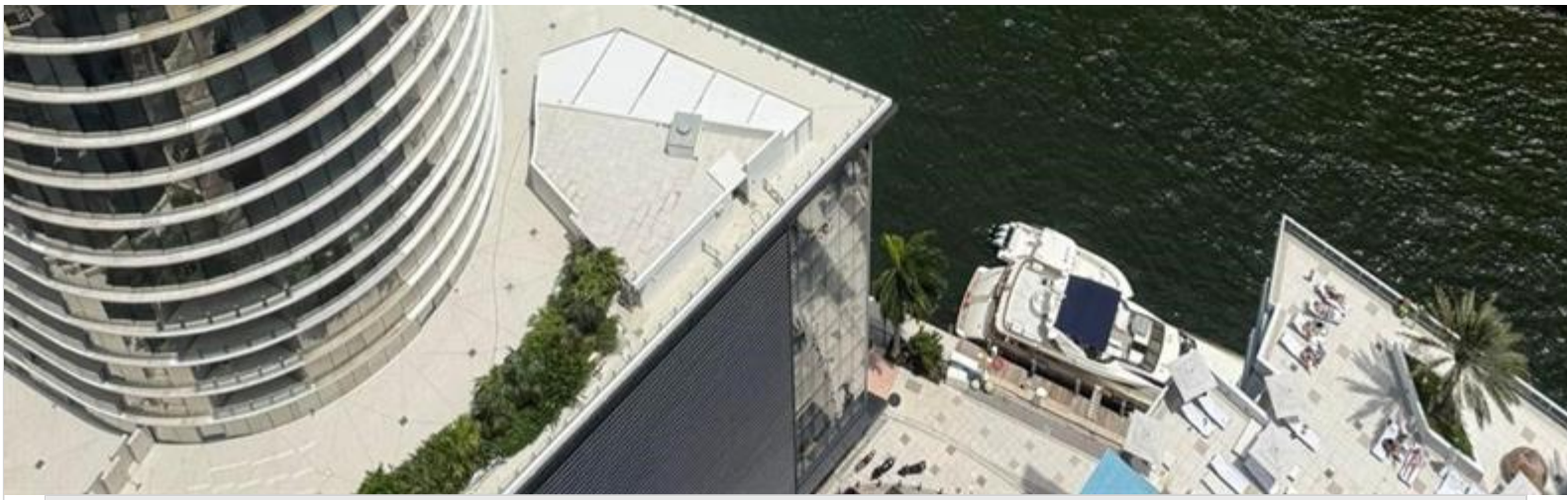


INES FLAX

YOUR PREMIER OCEANFRONT SPECIALIST
& MOST TRUSTED NAME IN SOUTH FLORIDA REAL ESTATE.

ONE Sotheby's International Realty
119 Washington Ave Suite 1000
Phone: - Fax:
<https://www.inesflax.com>
Email:





Price: \$2,000,000

MLS Number: A11980654

Condo / Town Home

200 Biscayne Boulevard Way Unit 4801, Miami, Florida 33131 USA

Beds: 2

Baths: 2

Half Baths: 1

Living Area: 2,457

Unit: 4801

HOA Fees: \$3,483

Waterfront: YES

Year Built: 2008

Community: EPIC WEST CONDO

Subdivision: EPIC WEST CONDO

ABOUT THIS PROPERTY

One of a kind lower penthouse unit in the Epic Residences in Downtown Miami. This spacious 2,457 SF home features 2.5 bathrooms, and floor-to-ceiling windows with stunning views of the Miami River, Biscayne Bay, and city skyline. It includes a gourmet kitchen, large living and dining areas, and expansive terraces ideal for entertaining. Residents enjoy amenities including pools, fitness center, spa, concierge, valet, and waterfront dining at Zuma restaurant, all within walking distance to Brickell and Miami's best restaurants and nightlife. near Bayfront Park and Brickell City Centre, minutes to Port Miami Center, in the heart of Miami's luxury waterfront corridor. HIGHEST AND BEST OFFER \$2M AND ABOVE

PROPERTY
LOCATION

Image

