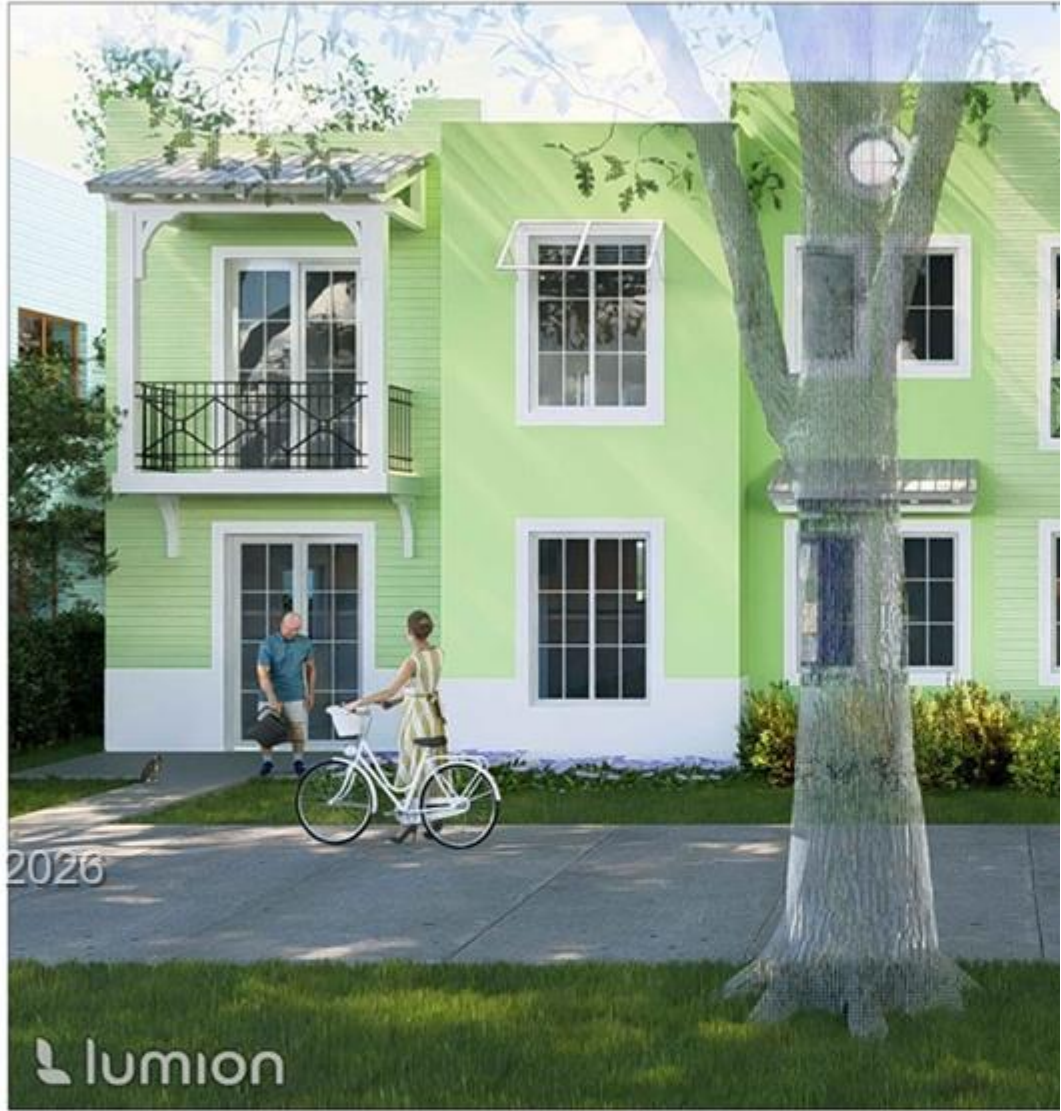


# INES FLAX

YOUR PREMIER OCEANFRONT SPECIALIST  
& MOST TRUSTED NAME IN SOUTH FLORIDA REAL ESTATE.



A11985341 SEFMLS© 2026

## NEW DU

3910-3920 GRAND AVE.

### INDEX PLAN

#### GENERAL SITE

- A-0 COVER SHEET
- A-0.1 CONTEXT
- A-1 GENERAL NOTES
- A-2 SITE PLAN
- CS DRAINAGE PLAN
- L-1 DISPOSITION PLAN
- L-2 LANDSCAPE PLAN

#### ARCHITECTURE

- A-3 GROUND FLOOR PLAN
- A-4 SECOND FLOOR PLAN
- A-5 ROOF PLAN
- A-6 REFLECTING CEILING PLAN
- A-7 DIAGRAMS
- A-8 ELEVATIONS
- A-9 ELEVATIONS

#### STRUCTURE

- S01 GENERAL NOTES & DRAWING
- S02 FOUNDATION & GROUND FL
- S03 SECOND FLOOR FRAMING
- S04 ROOF PLAN
- S05 W&D WIND DESIGN PRESSU
- S06 W&D WIND DESIGN PRESSU
- S07 SECTIONS

- A-10 ARCH. SECTIONS
- A-11 ARCH. DETAILS
- A-12 TYPICAL WALL SECTION
- A-13 STAIR & RAILING DETAILS

- 508 STAIR DETAIL SECTION
- 509 TYPICAL DETAILS

**Price: \$1,085,000**

**MLS Number: A11985341**

**Single Family**

**3925 Washington Ave, Miami, Florida 33133 USA**

**Beds: 3**

**Baths: 4**

**Living Area: 4,792**

**Lot Square Feet: 5,063**

**HOA Fees: \$0**

**Year Built: 2026**

**Community: ST ALBANS PARK**

**Subdivision: ST ALBANS PARK**

**Elementary School: Sunset**

**Junior High: Ponce De Leon**

**High School: Coral Gables**

## ABOUT THIS PROPERTY

---

Prime development opportunity! This empty lot is perfectly situated in a highly desirable location with easy access to and more. A full construction permit is already approved and on hand for a beautifully designed duplex, saving you a bedrooms and 4 full bathrooms. An outstanding opportunity for investors or developers looking to start building imme

PROPERTY  
LOCATION

---

Image

