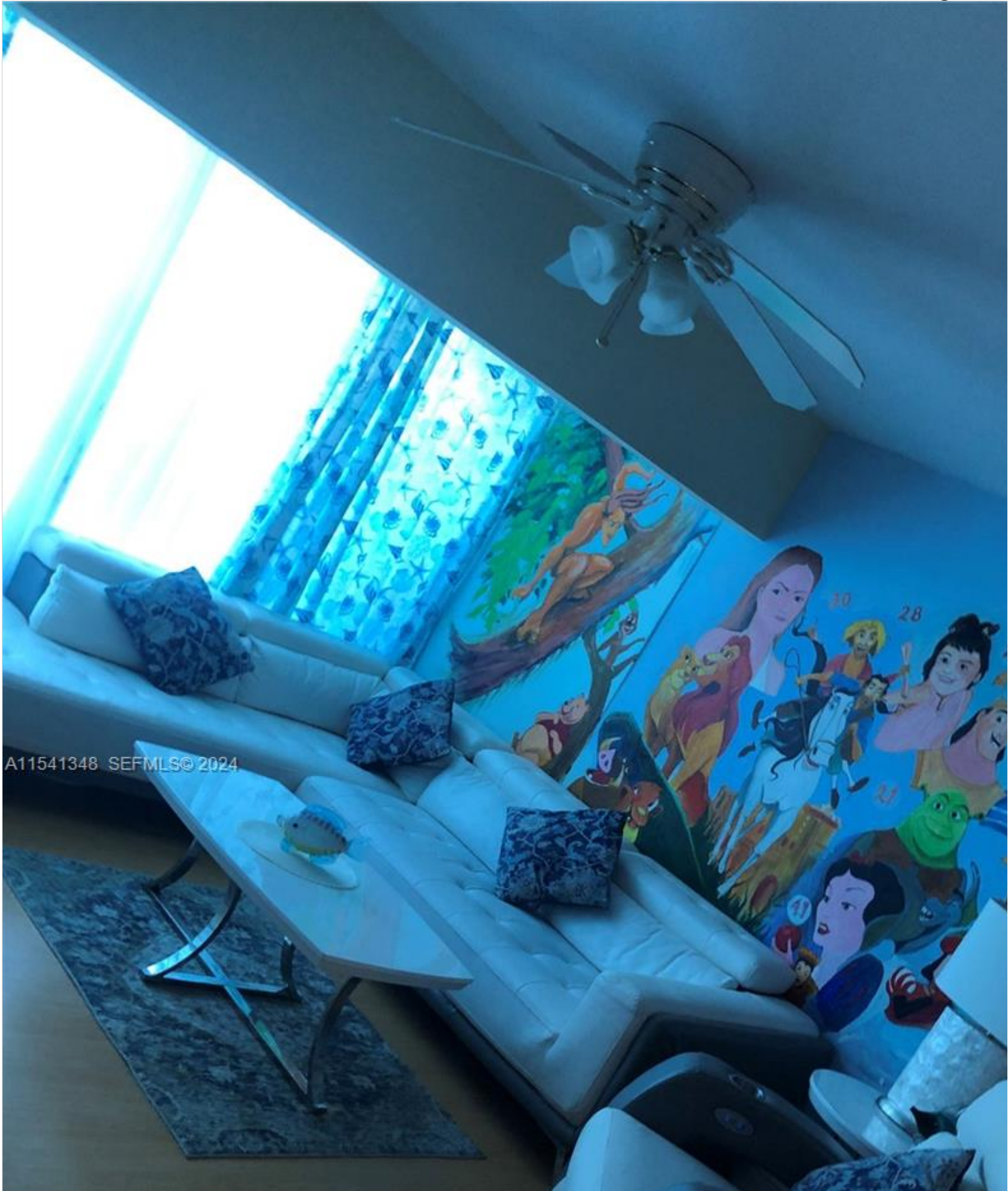


# INES FLAX

YOUR PREMIER OCEANFRONT SPECIALIST  
& MOST TRUSTED NAME IN SOUTH FLORIDA REAL ESTATE.

ONE Sotheby's Internatio  
119 Washington Ave Sui  
33139  
Phone: 786.218.7600 -  
<https://www.inesflax.com>  
Email: InesFlax@aol.com



A11541348 SEFMLS© 2024



**Price:** \$4,500,000

**MLS Number:** A11541348

**Condo / Town Home**

**5445 Collins Ave Unit TH2, Miami Beach, Florida 33140 USA**

**Beds:** 4

**Baths:** 4

**Living Area:** 1,460

**Unit:** TH2

**HOA Fees:** \$3,496

**Waterfront:** YES

**Year Built:** 1966

**Community:** CASTLE BEACH CLUB CONDO

**Subdivision:** CASTLE BEACH CLUB CONDO

**Elementary School:** North Beach

**Junior High:** Nautilus

**High School:** Miami Beach

## ABOUT THIS PROPERTY

---

unique property on the beach, 4 beds 4 baths direct ocean front Townhouse with big terrace (aprox 24 SF Patio) boat washer/dryer. Jacuzzi. Patio steps from the ocean, garden, valet Impact windows, all amenities included(Water, elec internet, Valet)

# PROPERTY LOCATION

---

Image

