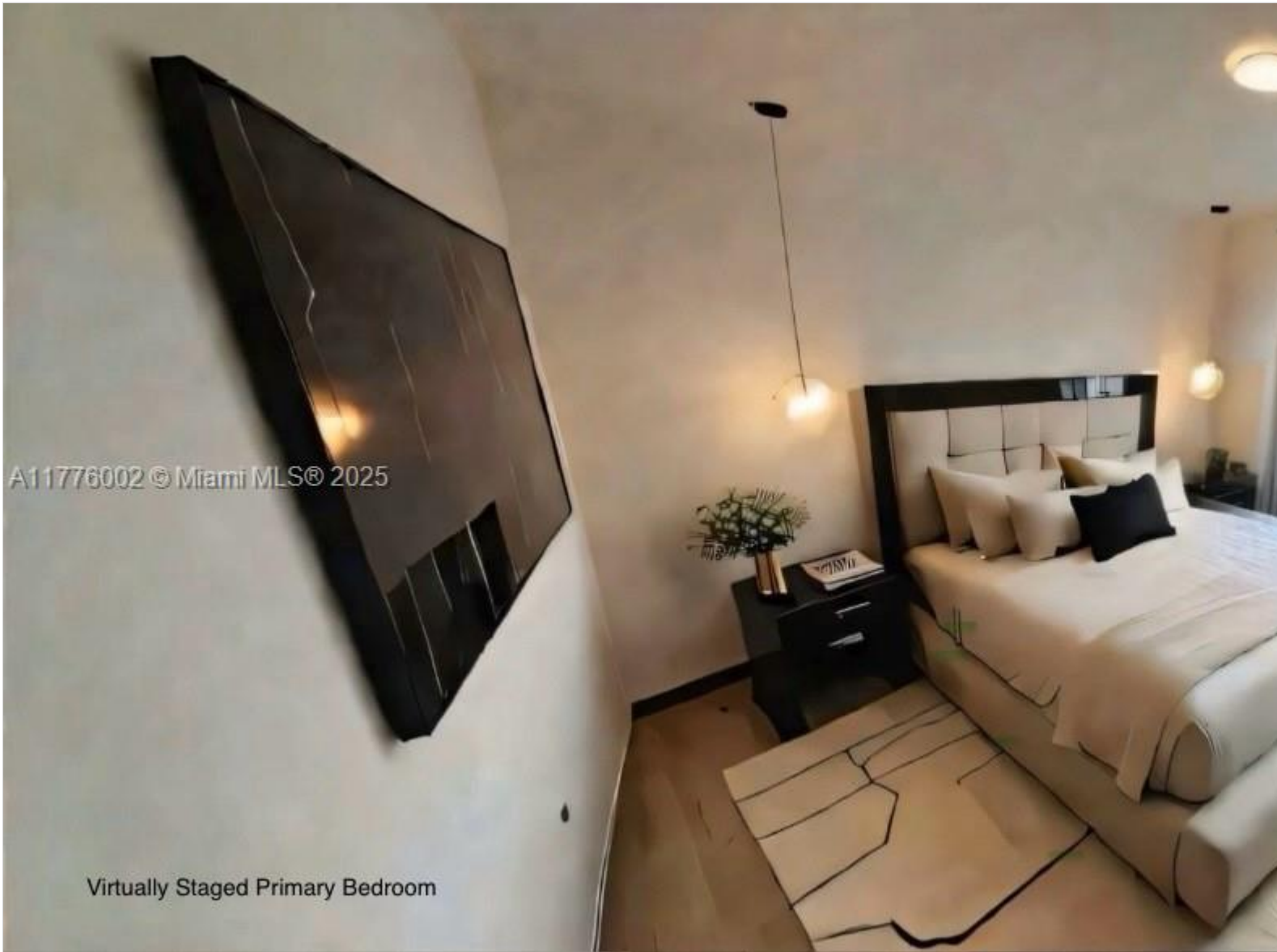


# INES FLAX

YOUR PREMIER OCEANFRONT SPECIALIST  
& MOST TRUSTED NAME IN SOUTH FLORIDA REAL ESTATE.



**Price: \$539,900**

**MLS Number: A11776002**

**Condo / Town Home**

**1250 S Miami Ave Unit 1206, Miami, Florida 33130 USA**

**Beds: 2**

**Baths: 2**

**Living Area: 1,143**

**Unit: 1206**

**HOA Fees: \$1,288**

**Year Built: 2004**

**Community: VUE AT BRICKELL CONDO**

**Subdivision: VUE AT BRICKELL CONDO**

**Elementary School: Southside**

**Junior High: Shenandoah**

**High School: Washington; Brooker T**

## ABOUT THIS PROPERTY

---

Amazing walk-to-everything Beautiful and bright 2 bed / 2 bath with oversized 260 SqFt terrace and stunning east-facing available unit at Vue at Brickell offers 1,143 SqFt of interior space, large bedrooms, walk-in closet, full-size washer/dryer. Full-service building with pool, cabanas, gym, 24hr concierge, valet, and cyber lounge. Unbeatable location in the Brickell metro mover, dining, and nightlife. Pet-friendly. Includes assigned parking. HOA \$1,288.58 includes \$253.26 monthly for assessments at closing. Some images have been virtually staged

Image

