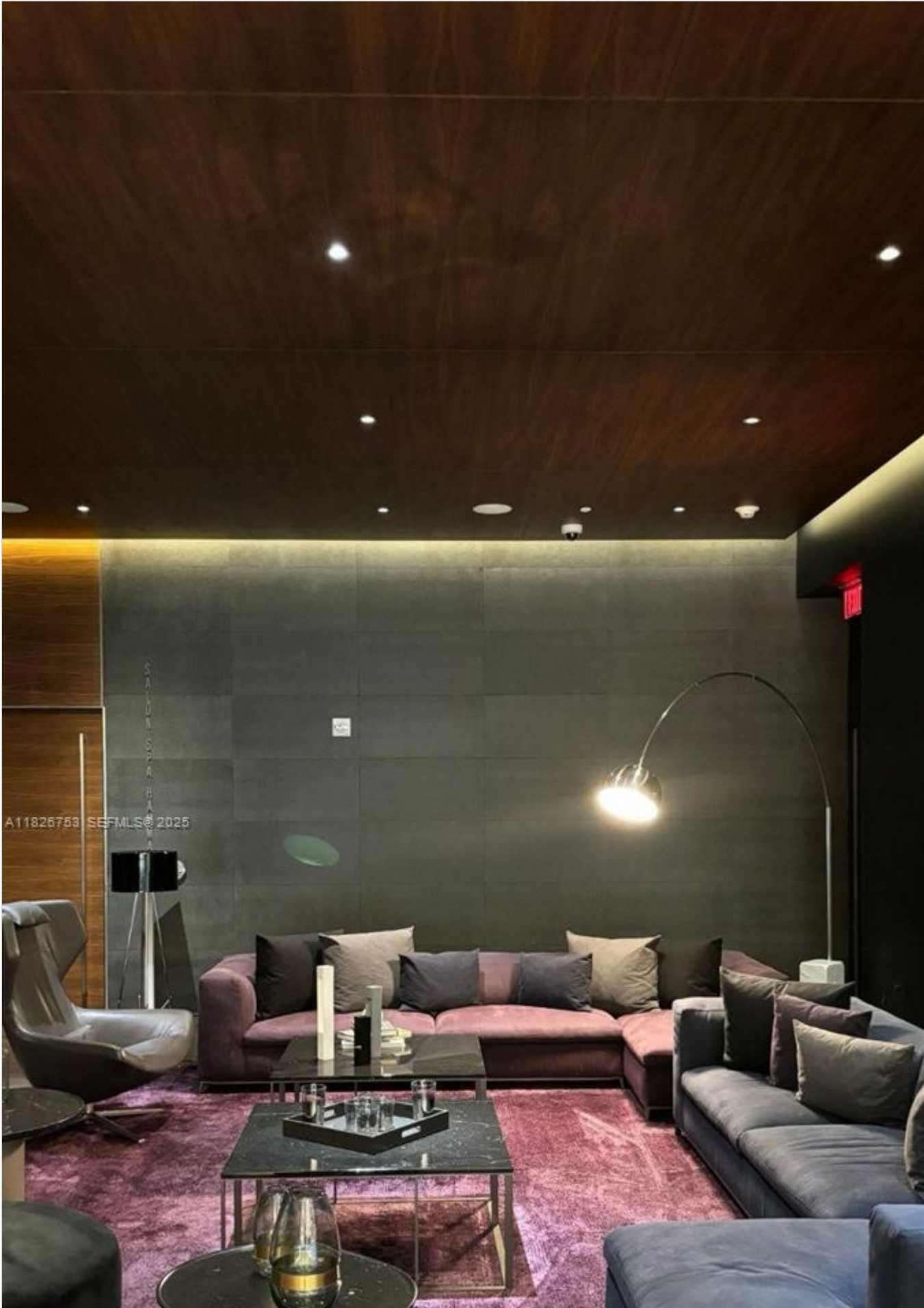


INES FLAX

YOUR PREMIER OCEANFRONT SPECIALIST
& MOST TRUSTED NAME IN SOUTH FLORIDA REAL ESTATE.

, 33139
Phone: - Fax:
<https://www.inesflax.com>
Email:





Price: \$1,495,000

MLS Number: A11826753

Condo / Town Home

68 SE 6th St Unit 2804, Miami, Florida 33131 USA

Beds: 3

Baths: 3

Half Baths: 1

Living Area: 1,660

Unit: 2804

HOA Fees: \$2,804

Year Built: 2016

Community: REACH CONDO

Subdivision: REACH CONDO

ABOUT THIS PROPERTY

Best prices modern & stylish bed 3 bed, 3.5 bath residence at REACH brickell city Centre. Luxury condo designed by Arquitectonica with breathtaking water and city views from the 28th floor in the most prominent and chic destinations at the intersection of Brickell entertainment, business, and living. This unit is ready to move in, featuring lux finishes and many upgrades. It also counts with an additional den space that you can use as a TV room or office. Choose endless upscale enjoyment in a nearly one-acre amenity deck: heated pools, fitness center, grills, family fun, spa, salon, concierge, and more. This is your opportunity to live the most privileged and connected experience in the center of it.

PROPERTY
LOCATION

Image

