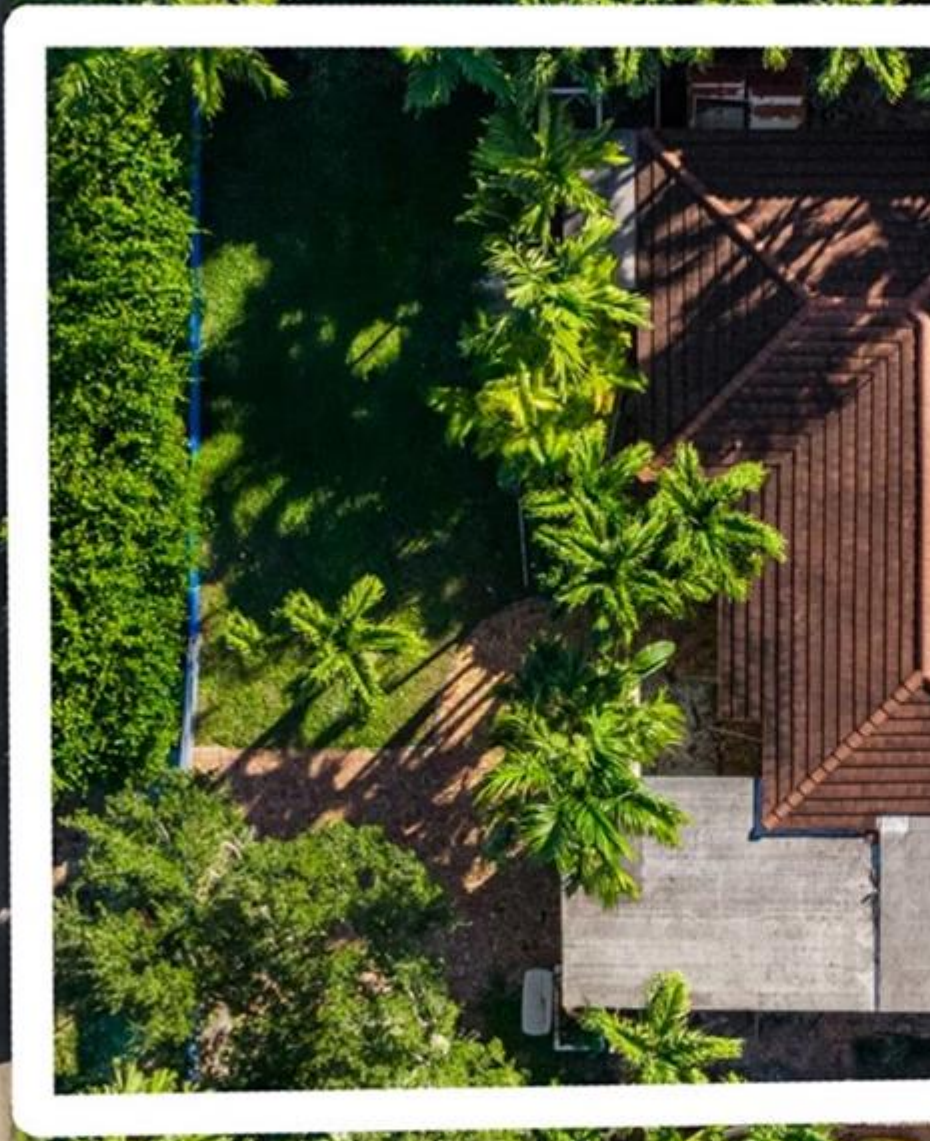
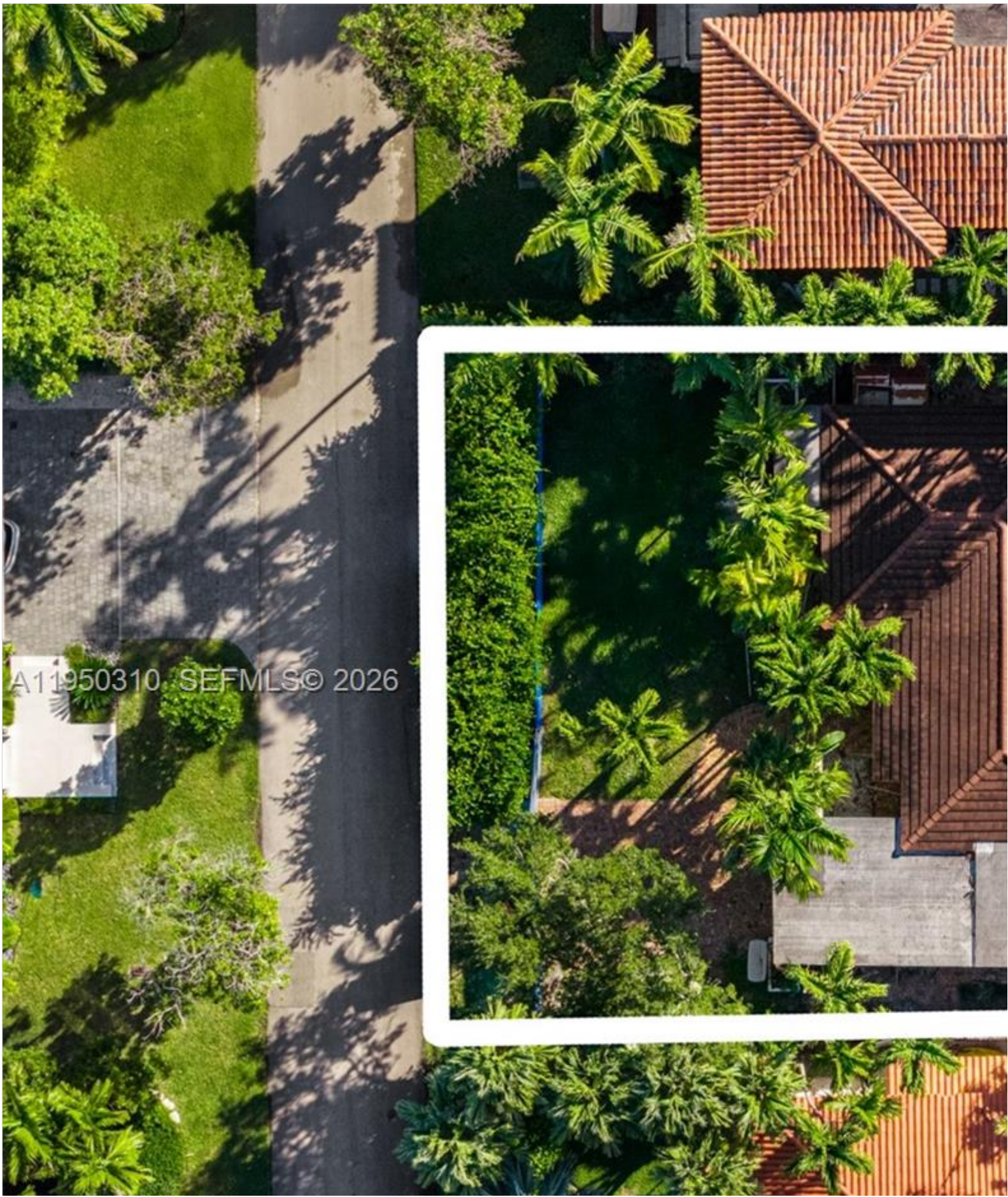


INES FLAX

YOUR PREMIER OCEANFRONT SPECIALIST
& MOST TRUSTED NAME IN SOUTH FLORIDA REAL ESTATE.



A11950310 SEFMLS© 2026



Price: \$2,950,000

MLS Number: A11950310

Single Family

760 Allendale Road, Key Biscayne, Florida 33149 USA

Beds: 3

Baths: 2

Living Area: 2,388

Lot Square Feet: 7,500

HOA Fees:

Year Built: 1950

Community: BISCAYNE KEY ESTATES

Subdivision: BISCAYNE KEY ESTATES

Elementary School: Keybiscayne

Junior High: Ponce De Leon

High School: Coral Gables

ABOUT THIS PROPERTY

An exceptional opportunity to build your dream home on a prime lot along desirable Allendale Road in the heart of Key Biscayne, offering custom luxury living. Enjoy the unique island lifestyle that makes Key Biscayne so special, with its pristine beaches, for its strong sense of community and family-friendly atmosphere, Key Biscayne offers a safe, welcoming environment. As one of Miami's most sought-after communities, combining tranquility, convenience, and an exceptional quality of life.

PROPERTY LOCATION

Image

