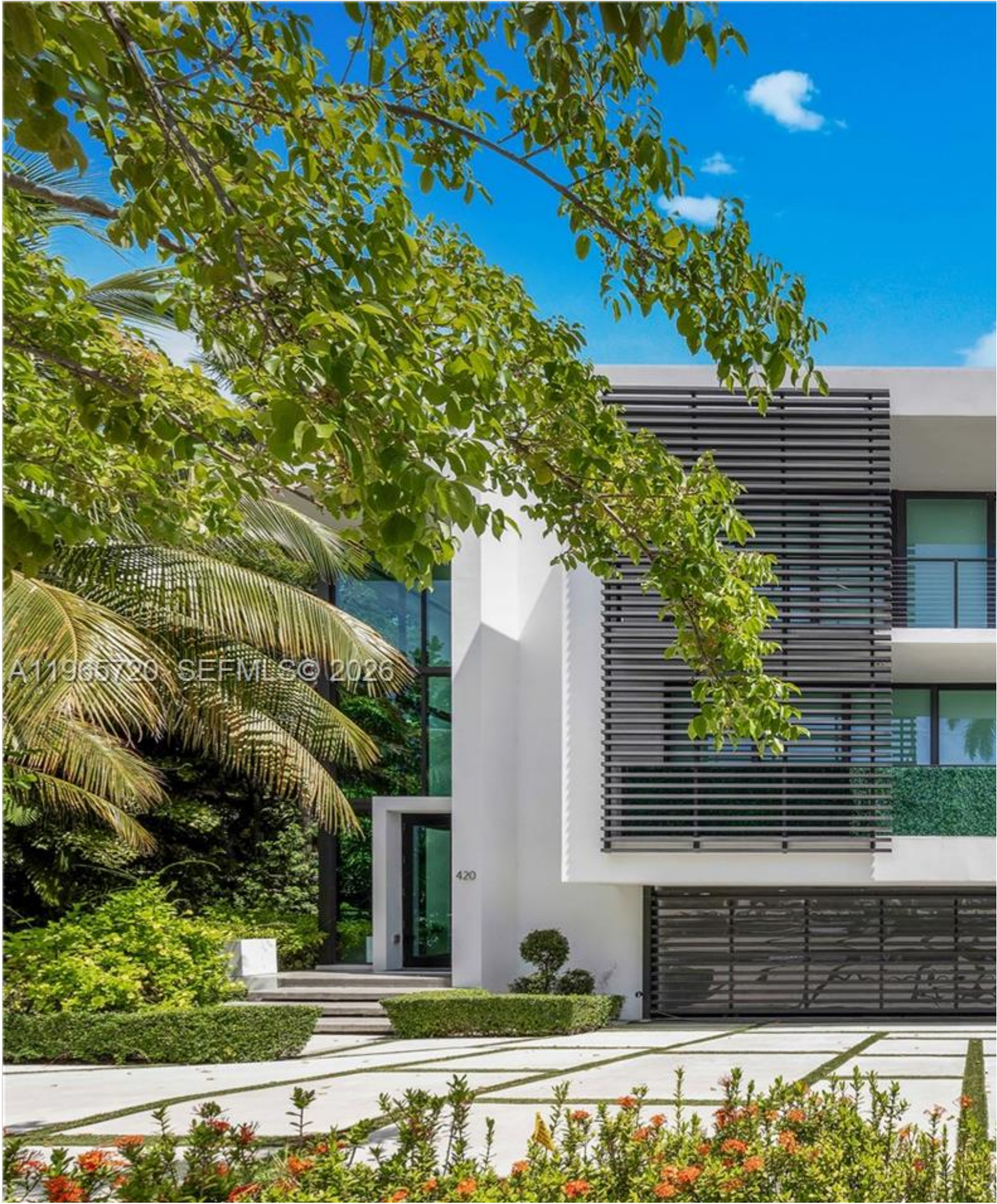


INES FLAX

YOUR PREMIER OCEANFRONT SPECIALIST
& MOST TRUSTED NAME IN SOUTH FLORIDA REAL ESTATE.



A11965720 SEFMIL © 2026



Price: \$65,000

MLS Number: A11965720

Rental

420 N Hibiscus Dr, Miami Beach, Florida 33139 USA

Beds: 5

Baths: 6

Half Baths: 1

Living Area: 5,642

Lot Square Feet: 10,387

HOA Fees:

Year Built: 2019

Community: HIBISCUS ISLAND

Subdivision: HIBISCUS ISLAND

Elementary School: South Pointe

Junior High: Nautilus

High School: Miami Beach

ABOUT THIS PROPERTY

Offered for annual lease, this modern masterpiece by award-winning architect Ralph Choëff is located on the cove completed, the residence makes a striking first impression with a dramatic 20-foot glass foyer, floating staircase, wide outdoor living. The sleek Mia Cucina kitchen is equipped with Wolf and Sub-Zero appliances, while additional highlights include a resort-style pool designed for comfort, privacy, and ease. The expansive primary suite features dual en suite bathrooms, offering a refined foundation with flexibility to personalize. Residents enjoy exclusive island amenities including access to Miami International Airport.

PROPERTY
LOCATION

Image

