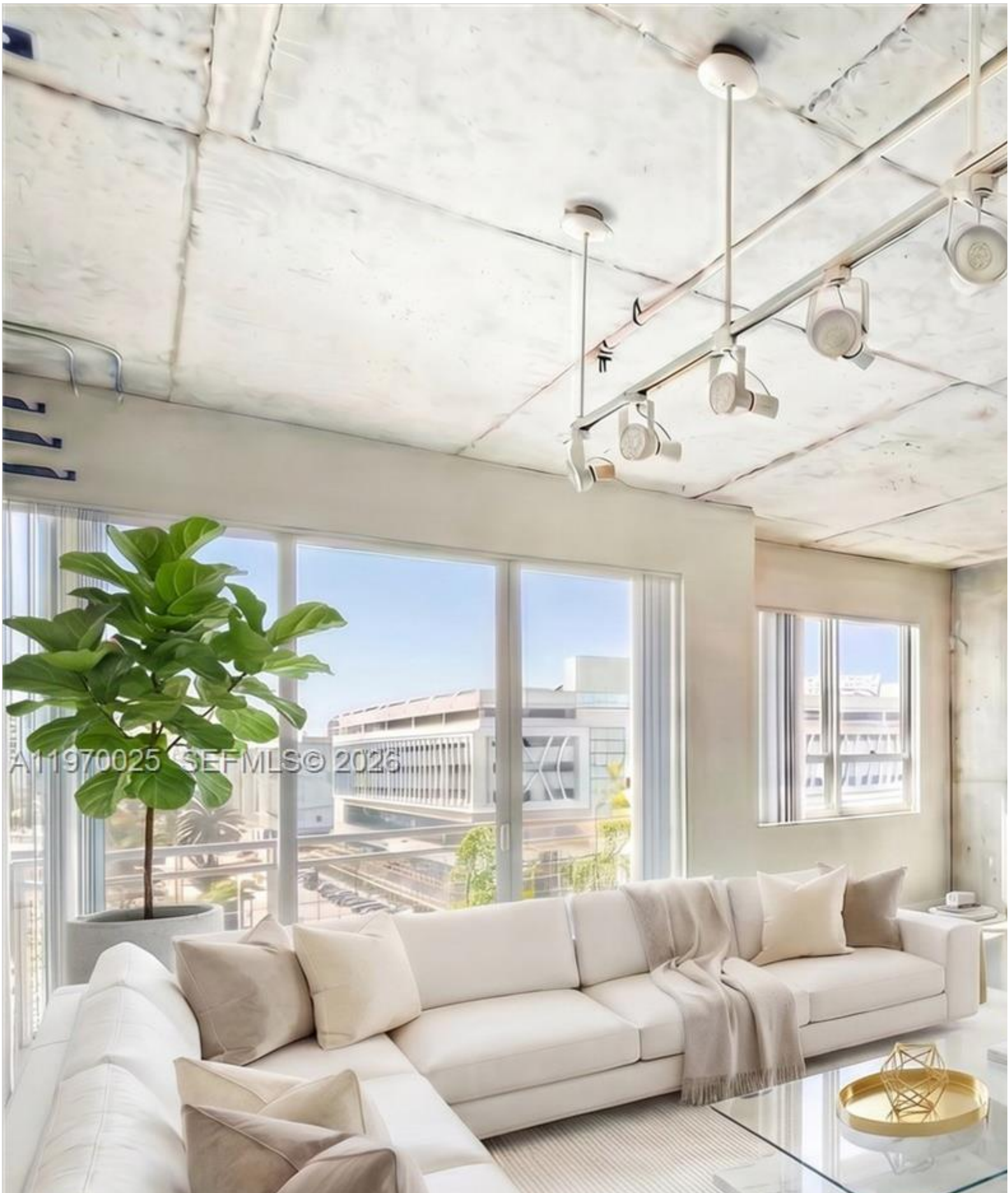


INES FLAX

YOUR PREMIER OCEANFRONT SPECIALIST
& MOST TRUSTED NAME IN SOUTH FLORIDA REAL ESTATE.



A11970025 SEFMLS © 2026



Price: \$544,900

MLS Number: A11970025

Condo / Town Home

2001 Biscayne Blvd Unit 2612, Miami, Florida 33137 USA

Beds: 2

Baths: 2

Living Area: 1,351

Unit: 2612

HOA Fees: \$1,278

Year Built: 2004

Community: CITE CONDO

Subdivision: CITE CONDO

Elementary School: Wheatley; Phyllis

Junior High: de Diego; Jose

High School: Washington; Brooker T

ABOUT THIS PROPERTY

TOP FLOOR. CORNER UNIT. UNOBSTRUCTED VIEWS. While the average 2-bed in the area gives you 1,000 sq f impact windows, private balcony, new AC, and short-term rental eligible. Steps from Margaret Pace Park, minutes to

PROPERTY LOCATION

Image

