

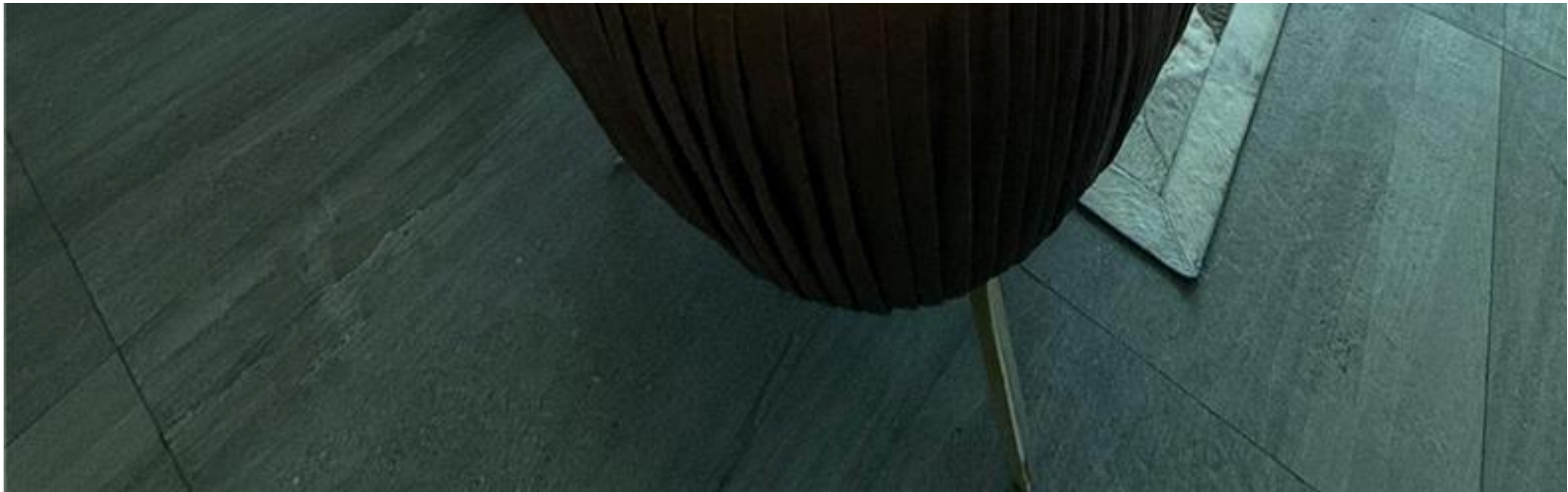
INES FLAX

YOUR PREMIER OCEANFRONT SPECIALIST
& MOST TRUSTED NAME IN SOUTH FLORIDA REAL ESTATE.

ONE Sotheby's Internati
119 Washington Ave Sui
Phone: 786.218.7600 -
<https://www.inesflax.com>
Email: InesFlax@aol.com



A11978645 SEFMLS© 2026



Price: \$5,500

MLS Number: A11978645

Rental

1080 Brickell Ave Unit 2109, Miami, Florida 33131 USA

Beds: 2

Baths: 2

Living Area: 1,134

Unit: 2109

HOA Fees:

Year Built: 2016

Community: THE BONDO (1080 BRICKELL)

Subdivision: THE BONDO (1080 BRICKELL)

ABOUT THIS PROPERTY

This exclusive 2 bedrooms/2 bathrooms unit features the finest finishes as Bosch appliances, Porcelanosa fixtures, I and an oversized balcony with spectacular views of Brickell. Situated in the best location in Brickell, close to trendy r bars. This is an excellent corner unit facing west with a fantastic view of the city. A privilege to live in! The Bond is str Brickell City Center and Mary Brickell Village. It offers top amenities as luxury pool, state of the art gym, spa, 24 hou valet service. Don't wait.

PROPERTY
LOCATION

Image

