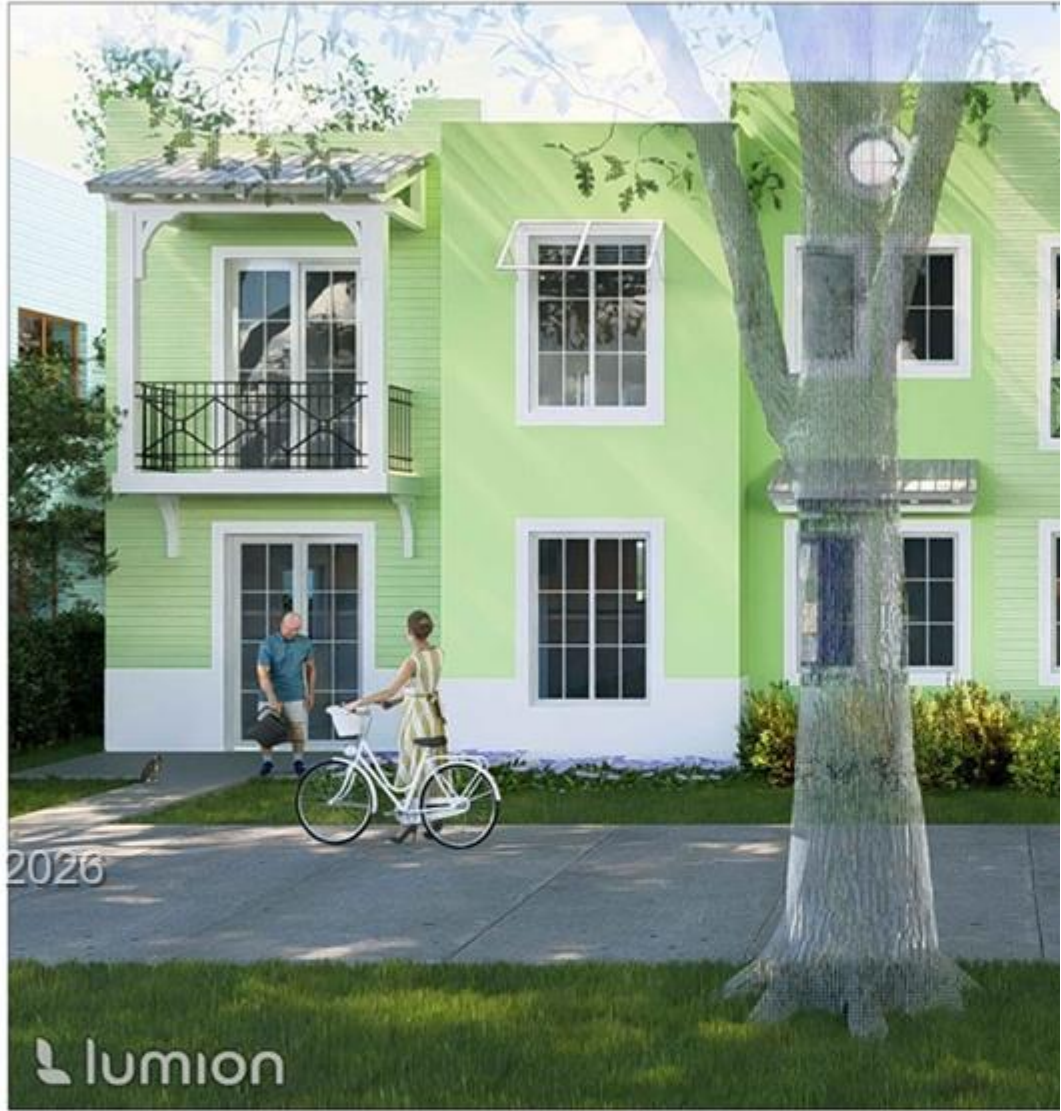


INES FLAX

YOUR PREMIER OCEANFRONT SPECIALIST
& MOST TRUSTED NAME IN SOUTH FLORIDA REAL ESTATE.



A11985341 SEFMLS © 2026

NEW DU

3910-3920 GRAND AVE.

INDEX PLAN

GENERAL SITE

- A-0 COVER SHEET
- A-0.1 CONTEXT
- A-1 GENERAL NOTES
- A-2 SITE PLAN
- CS DRAINAGE PLAN
- L-1 DISPOSITION PLAN
- L-2 LANDSCAPE PLAN

ARCHITECTURE

- A-3 GROUND FLOOR PLAN
- A-4 SECOND FLOOR PLAN
- A-5 ROOF PLAN
- A-6 REFLECTING CEILING PLAN
- A-7 DIAGRAMS
- A-8 ELEVATIONS
- A-9 ELEVATIONS

STRUCTURE

- S01 GENERAL NOTES & DRAWING
- S02 FOUNDATION & GROUND FL
- S03 SECOND FLOOR FRAMING
- S04 ROOF PLAN
- S05 W&D WIND DESIGN PRESSU
- S06 W&D WIND DESIGN PRESSU
- S07 SECTIONS

- ARCH. ELEVATIONS
- A-10 ARCH. SECTIONS
- A-11 ARCH. DETAILS
- A-12 TYPICAL WALL SECTION
- A-13 STAIR & RAILING DETAILS

- 508 STAIR DETAIL SECTION
- 509 TYPICAL DETAILS

Price: \$1,085,000

MLS Number: A11985341

Single Family

3925 Washington Ave, Miami, Florida 33133 USA

Beds: 3

Baths: 4

Living Area: 4,792

Lot Square Feet: 5,063

HOA Fees: \$0

Year Built: 2026

Community: ST ALBANS PARK

Subdivision: ST ALBANS PARK

Elementary School: Sunset

Junior High: Ponce De Leon

High School: Coral Gables

ABOUT THIS PROPERTY

Prime development opportunity! This empty lot is perfectly situated in a highly desirable location with easy access to and more. A full construction permit is already approved and on hand for a beautifully designed duplex, saving you a bedrooms and 4 full bathrooms. An outstanding opportunity for investors or developers looking to start building imme

PROPERTY LOCATION

Image

