

INES FLAX

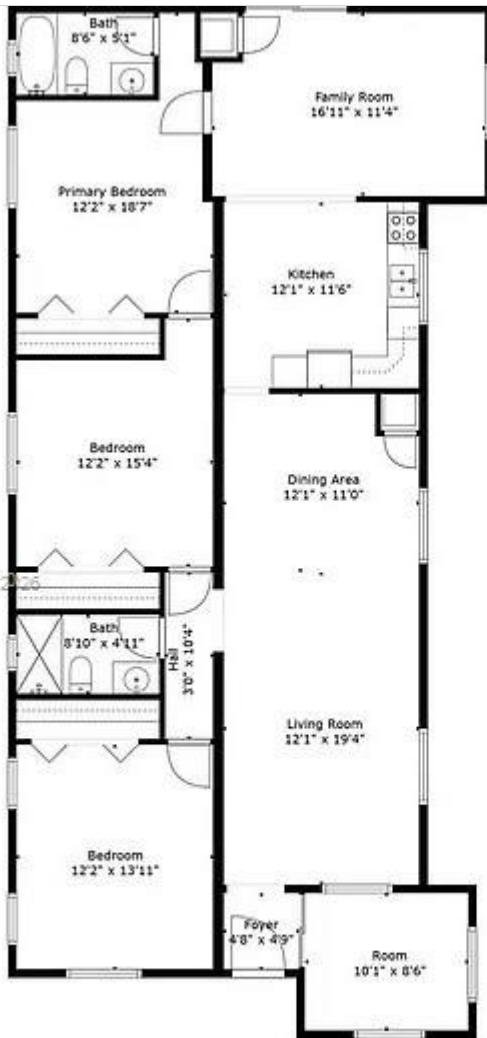
YOUR PREMIER OCEANFRONT SPECIALIST
& MOST TRUSTED NAME IN SOUTH FLORIDA REAL ESTATE.

ONE Sotheby's International Realty
119 Washington Ave Suite 33139

Phone: 786.218.7600 -

<https://www.inesflax.com>

Email: InesFlax@aol.com



A12004207 SEFMLS® 2/26

Sizes And Dimensions Are Approximate. Actual May Vary.

Price: \$1,330,000

MLS Number: A12004207

Single Family

426 SW 26th Rd, Miami, Florida 33129 USA

Beds: 4

Baths: 3

Living Area: 1,688

Lot Square Feet: 6,750

HOA Fees:

Year Built: 1925

Community: BRICKELL HAMMOCK UNIT NO

Subdivision: BRICKELL HAMMOCK UNIT NO

Elementary School: Coral Way

Junior High: Shenandoah

High School: Miami Senior

ABOUT THIS PROPERTY

Beautifully refurbished single-family home in one of Miami's most desirable locations. Nestled in the sought-after Roads/Brickell area, this residence offers a rare combination of charm, comfort, and convenience. Featuring 4 bedrooms and 3 bathrooms, the home showcases updated interiors, abundant natural light, and a functional layout ideal for both everyday living and entertaining. Enjoy close proximity to Brickell, Downtown Miami, Key Biscayne, top dining, shopping, parks, and major roadways. A great opportunity to own a move-in ready home in a prime neighborhood. Offered at \$1,475,000.

PROPERTY
LOCATION

Image

