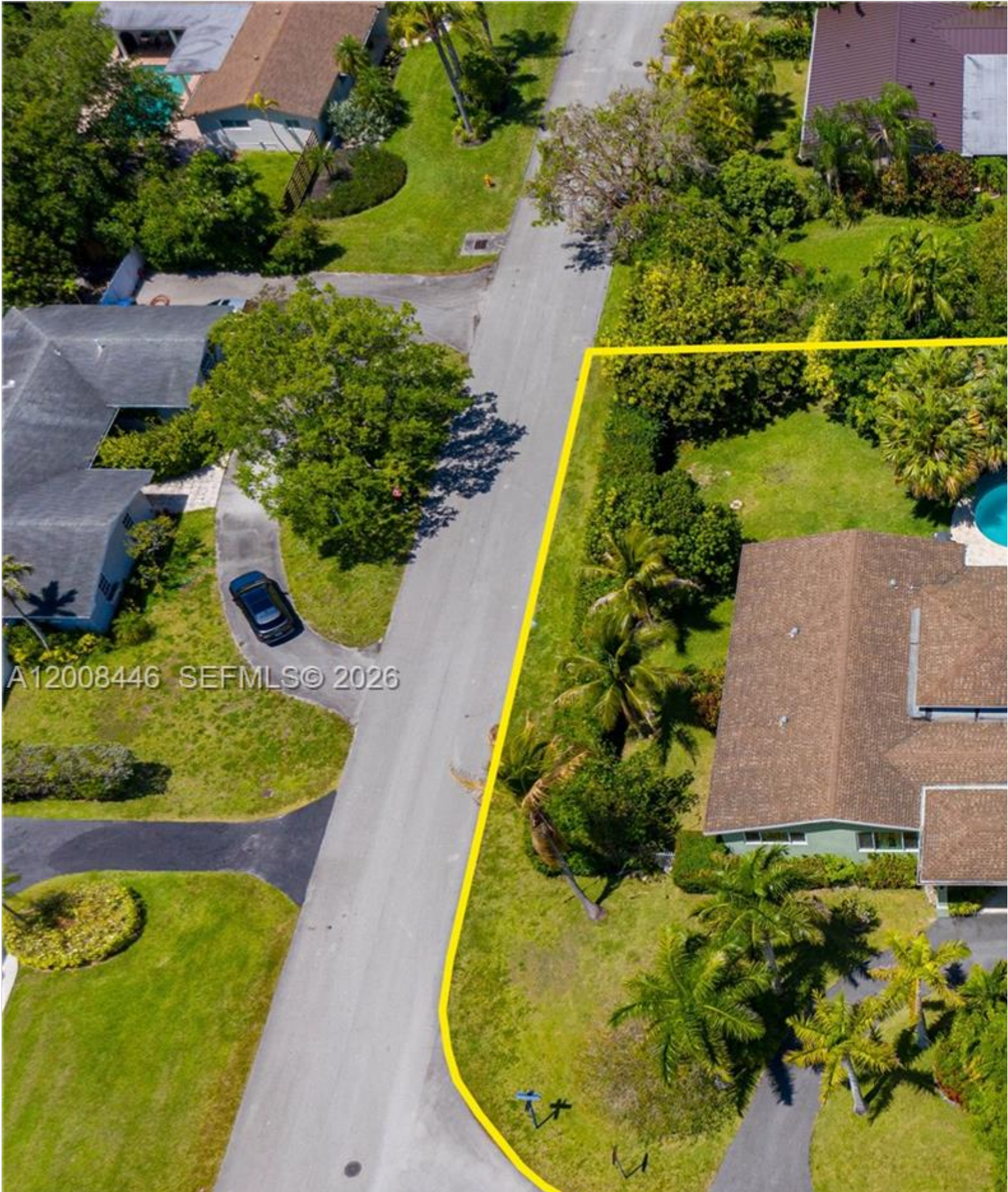


# INES FLAX

YOUR PREMIER OCEANFRONT SPECIALIST  
& MOST TRUSTED NAME IN SOUTH FLORIDA REAL ESTATE.



A12008446 SEFMLS© 2026



**Price: \$1,370,000**

**MLS Number: A12008446**

**Single Family**

**14590 SW 84th Ct, Palmetto Bay, Florida 33158 USA**

**Beds: 5**

**Baths: 3**

**Living Area: 3,087**

**Lot Square Feet: 17,812**

**HOA Fees:**

**Year Built: 1960**

**Community: SUN CORAL ESTS 3RD ADDN**

**Subdivision: SUN CORAL ESTS 3RD ADDN**

**Elementary School: Coral Reef**

**Junior High: Southwood**

**High School: Miami Palmetto**

## ABOUT THIS PROPERTY

---

Rare opportunity in North Palmetto Bay! Situated on an oversized 17,812 sq. ft. corner lot in an X flood zone, this on a split floor plan, the layout provides privacy and versatility, including a generously sized bedroom with an adjacent f features a large kitchen with granite countertops and an oversized island that opens to the family room, creating an i The property feels larger than reflected, as it includes a permitted addition that enhances the overall living space, off expansive green space, and a variety of mature tropical fruit trees, including mango, lychee, sapodilla, starfruit, bana located near Coral Reef Park, shopping, dining, and both public and private schools. Check out the virtual tour.

# PROPERTY LOCATION

---

Image

