

# INES FLAX

YOUR PREMIER OCEANFRONT SPECIALIST  
& MOST TRUSTED NAME IN SOUTH FLORIDA REAL ESTATE.

ONE Sotheby's Internatio  
119 Washington Ave Sui  
33139

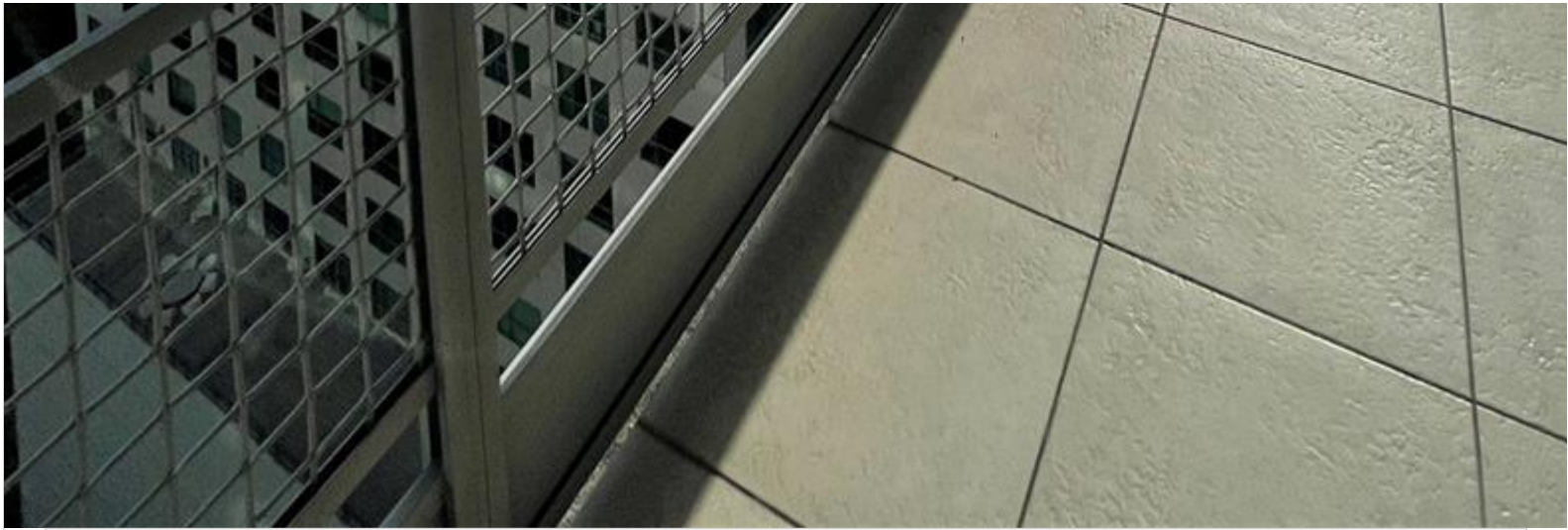
Phone: 786.218.7600 -

<https://www.inesflax.com>

Email: InesFlax@aol.com



A12009167 SEFMLS© 2026



**Price: \$630,000**

**MLS Number: A12009167**

**Condo / Town Home**

**690 SW 1st Ct Unit 3115, Miami, Florida 33130 USA**

**Baths: 2**

**Living Area: 1,255**

**Unit: 3115**

**HOA Fees: \$1,530**

**Waterfront: YES**

**Year Built: 2006**

**Community: NEO VERTIKA CONDO**

**Subdivision: NEO VERTIKA CONDO**

**Elementary School: Southside**

**Junior High: Shenandoah**

## ABOUT THIS PROPERTY

---

Beautiful 1255 sf, two story loft on the Miami river with a South view! The Brickell area offers a bustling night-life and restaurants at your doorstep. 2 blocks from Brickell City Center. This apartment comes with a parking assigned and valet parking. Amenities include heated community pool, exercise room, sauna and steam room, dog park, game room etc. Management office on site. NOTE: listed as a 1 Bed, but is a LOFT (two story open space) - there is no walls dividing the two stories.

# PROPERTY LOCATION

---

Image

