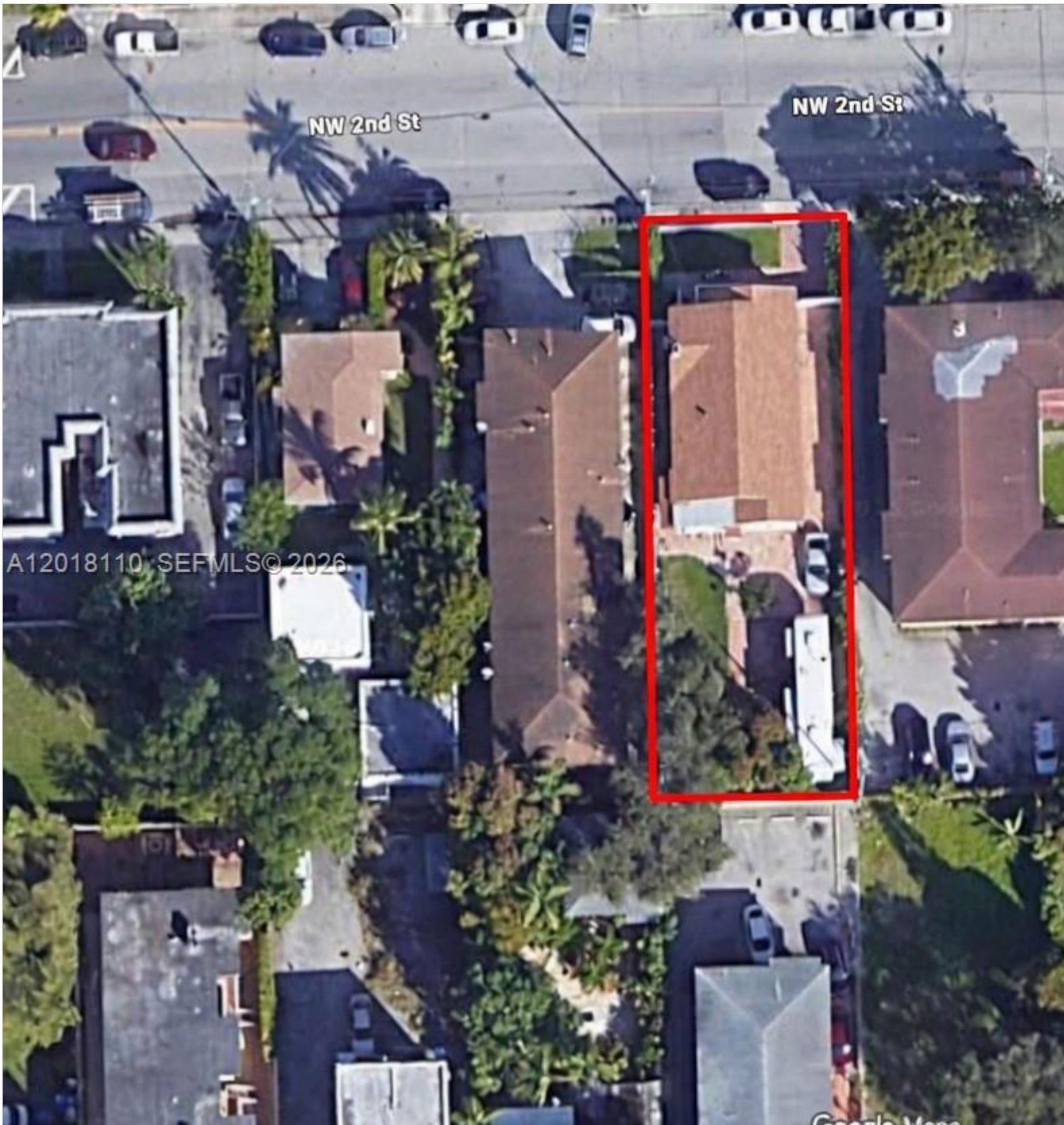


# INES FLAX

YOUR PREMIER OCEANFRONT SPECIALIST  
& MOST TRUSTED NAME IN SOUTH FLORIDA REAL ESTATE.



**Price:** \$5,000,000

**MLS Number:** A12018110

**Single Family**

**1442 NW 2nd St, Miami, Florida 33125 USA**

**Beds:** 4

**Baths:** 2

**Living Area:** 1,598

**Lot Square Feet:** 7,000

**HOA Fees:**

**Year Built:** 1927

**Community:** LAWRENCE ESTATE LAND CO

**Subdivision:** LAWRENCE ESTATE LAND CO

## ABOUT THIS PROPERTY

---

Exceptional property situated on a generous 7,000 square foot lot in one of Miami's most sought-after investment corridors with strong appreciation with robust rental demand and redevelopment potential. Current zoning allows for flexibility and income-generating upside. Established neighborhood near downtown, close to I-95, Wynwood, and cultural amenities. Comparable multifamily properties on this corridor are highly sought after. Perfect for developer, fix-and-flip investor,

# PROPERTY LOCATION

---

Image

