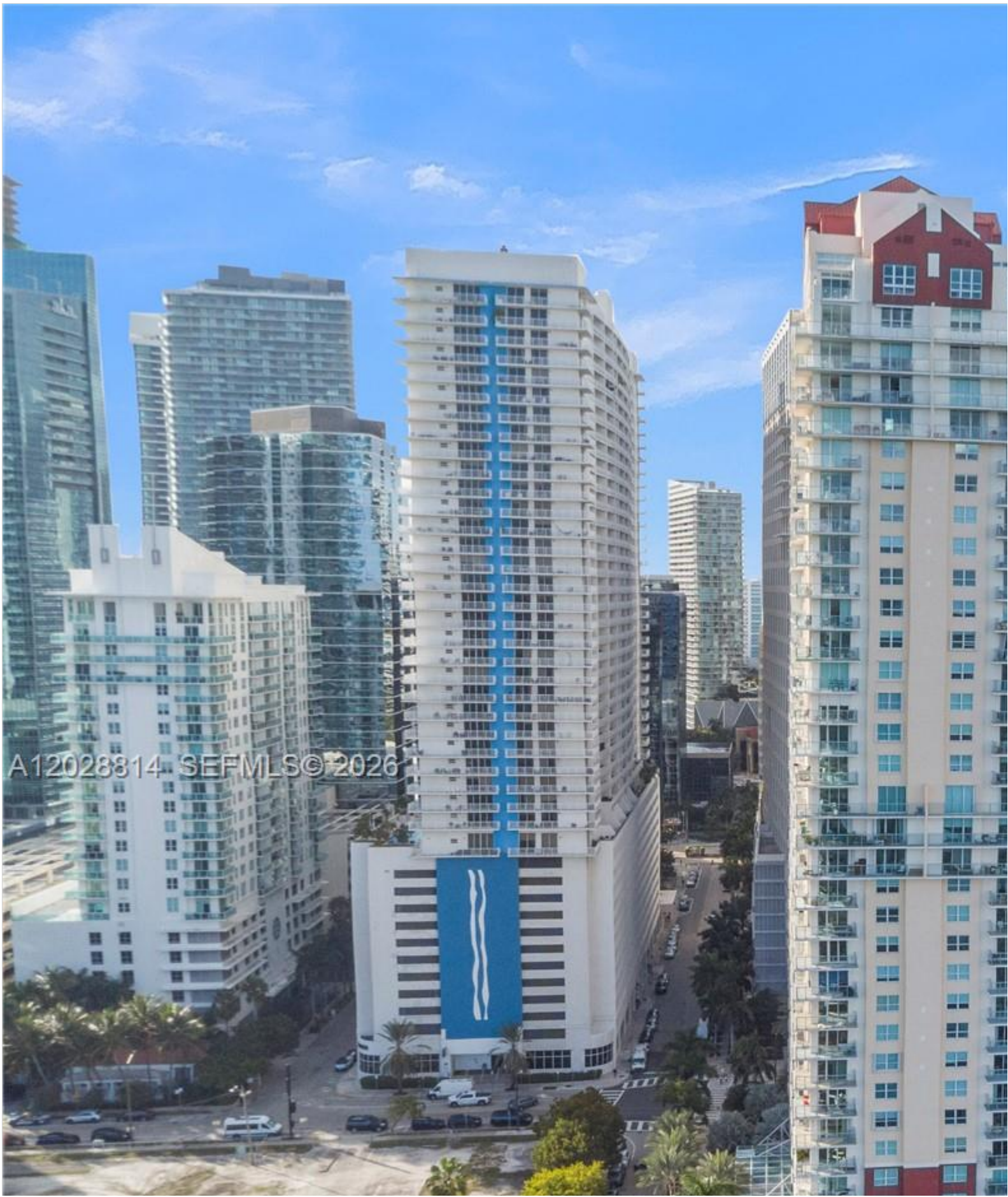
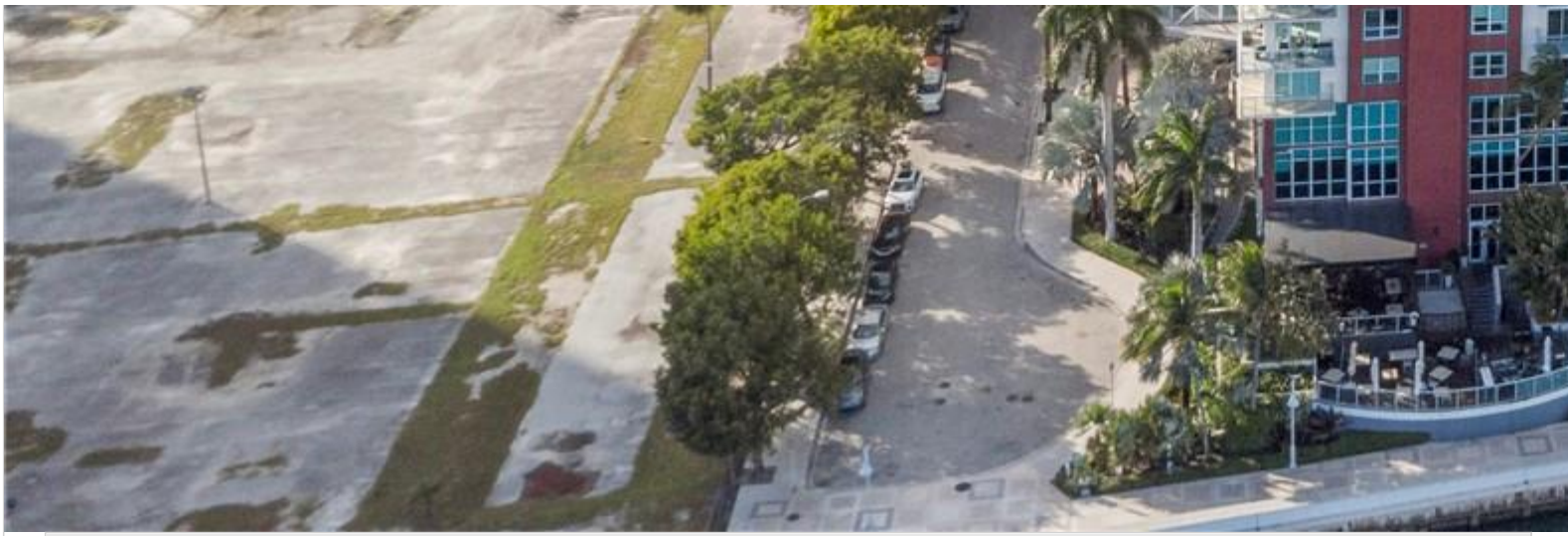


INES FLAX

YOUR PREMIER OCEANFRONT SPECIALIST
& MOST TRUSTED NAME IN SOUTH FLORIDA REAL ESTATE.



A12028814 SEFMLS © 2026



Price: \$5,900

MLS Number: A12028814

Rental

1155 Brickell Bay Dr Unit PH102, Miami, Florida 33131 USA

Beds: 3

Baths: 2

Living Area: 1,490

Unit: PH102

HOA Fees:

Waterfront: YES

Year Built: 2001

Community: THE MARK ON BRICKELL COND

Subdivision: THE MARK ON BRICKELL COND

Elementary School: Southside

Junior High: Shenandoah

ABOUT THIS PROPERTY

Luxury penthouse for rent at The Mark on Brickell in the heart of Miami's Financial District. This spacious 3BR/2BA r windows, and a large wraparound balcony perfect for entertaining or relaxing. The desirable split-bedroom floor plan and dining areas. The primary suite includes a walk-in closet and renovated en-suite bath with marble finishes and a Brickell, this residence includes two assigned parking spaces. Residents enjoy premium amenities including a fitness; undergoing renovation; residents have access to the Hyatt Centric pool directly across the street during this time. Pri and major corporate offices, with easy access to I-95, Downtown Miami, Miami Beach, and Miami International Airpc

PROPERTY LOCATION

Image

